

Recombinant Active Human LGALS1 Protein, His-tagged(N-ter)

Cat. No. LGALS1-227H Lot. No. (See product label)

SPECIFICATION

Product Overview	Recombinant Active Human LGALS1 Protein with His tag (N-ter) was expressed in E. coli.
Species	Human
Source	E.coli
Description	The galectins are a family of beta-galactoside-binding proteins implicated in modulating cell-cell and cell-matrix interactions. This gene product may act as an autocrine negative growth factor that regulates cell proliferation. [provided by RefSeq, Jul 2008]
Form	Powder
Bio-activity	Measured by its ability to agglutinate human red blood cells. The ED50 for this effect is < 2 µg/mL.
AA Sequence	ACGLVASNLNLKPGECLRVGEVAPDAKSFVLNLGKDSNNLCLHFNPRFNAHGDN TIVCNSKDGGAWGTEQREAVFPFQPGSVAEVCITFDQANLTVKLPDGYEFKFPNRL NLEAINYMAADGDFKIKCVAFD
Endotoxin	Endotoxin level is less than 0.1 EU/µg of the protein, as determined by the LAL test.
Purity	> 98% (by SDS-PAGE)

 Tel: 1-631-559-9269 1-516-512-3133

 Email: info@creative-biomart.com  Fax: 1-631-938-8127

 45-1 Ramsey Road, Shirley, NY 11967, USA

Applications	SDS-PAGE
Notes	For laboratory research only, not for drug, diagnostic or other use.
Storage	Lyophilized protein should be stored at -20°C. After reconstitution, aliquot and store at -20°C or -80°C for up to one month. Storage in frost free freezers is not recommended. Avoid repeated freeze/thaw cycles. Suggest spin the vial prior to opening.
Storage Buffer	PBS (pH 7.4)
Reconstitution	It is recommended to reconstitute the lyophilized protein in sterile water to a concentration not less than 100 µg/mL and incubate the stock solution for at least 20 min at room temperature to make sure the protein is dissolved completely.

GENE INFORMATION

Gene Name	LGALS1 lectin, galactoside-binding, soluble, 1 [Homo sapiens]
Official Symbol	LGALS1
Synonyms	LGALS1; lectin, galactoside-binding, soluble, 1; galectin-1; galectin 1; GBP; HBL; HPL; gal-1; HLBP14; galaptin; 14 kDa lectin; S-Lac lectin 1; lactose-binding lectin 1; 14 kDa laminin-binding protein; putative MAPK-activating protein PM12; beta-galactoside-binding lectin L-14-I; beta-galactoside-binding protein 14kDa; GAL1; DKFZp686E23103;
Gene ID	3956
mRNA Refseq	NM_002305

 Tel: 1-631-559-9269 1-516-512-3133

 Email: info@creative-biomart.com  Fax: 1-631-938-8127

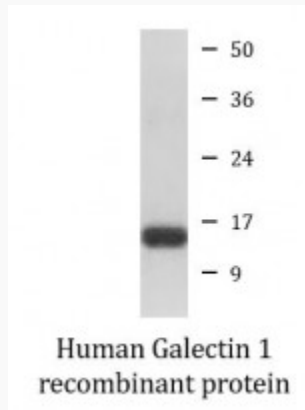
 45-1 Ramsey Road, Shirley, NY 11967, USA

Protein Refseq NP_002296

MIM 150570

UniProt ID P09382

SDS-PAGE



 Tel: 1-631-559-9269 1-516-512-3133

 Email: info@creative-biomart.com  Fax: 1-631-938-8127

 45-1 Ramsey Road, Shirley, NY 11967, USA