

## Recombinant Human LGALS1 Protein (Met1-Asp135), C-His tagged

Cat. No. LGALS1-3142H Lot. No. (See product label)

### SPECIFICATION

<b>Product Overview</b>	Recombinant human LGALS1 (Met1~Asp135) protein fused with the C-terminal His tag was expressed in E. coli.
<b>Species</b>	Human
<b>Source</b>	E.coli
<b>ProteinLength</b>	Met1-Asp135
<b>Molecular Mass</b>	15.61 kDa
<b>Purity</b>	>90 % as determined by SDS-PAGE.
<b>Notes</b>	For research use only.
<b>Storage</b>	Use a manual defrost freezer and avoid repeated freeze thaw cycles. Store at 2 to 8 centigrade for one week. Store at -20 to -80 centigrade for twelve months from the date of receipt.
<b>Storage Buffer</b>	Supplied as solution form in 50 mM Tris-HCl, pH 7.5, 150 mM NaCl or lyophilized from 50 mM Tris-HCl, pH 7.5, 150 mM NaCl.
<b>Reconstitution</b>	Reconstitute in sterile water for a stock solution.

 Tel: 1-631-559-9269 1-516-512-3133

 Email: [info@creative-biomart.com](mailto:info@creative-biomart.com)  Fax: 1-631-938-8127

 45-1 Ramsey Road, Shirley, NY 11967, USA

**Shipping**

In general, proteins are provided as lyophilized powder/frozen liquid. They are shipped out with dry ice/blue ice unless customers require otherwise.

**GENE INFORMATION**
**Gene Name**

LGALS1 lectin, galactoside-binding, soluble, 1 [ Homo sapiens (human) ]

**Official Symbol**

LGALS1

**Synonyms**

LGALS1; lectin, galactoside-binding, soluble, 1; galectin-1; galectin 1; GBP; HBL; HPL; gal-1; HLBP14; galaptin; 14 kDa lectin; S-Lac lectin 1; lactose-binding lectin 1; 14 kDa laminin-binding protein; putative MAPK-activating protein PM12; beta-galactoside-binding lectin L-14-I; beta-galactoside-binding protein 14kDa; GAL1; DKFZp686E23103;

**Gene ID**

3956

**mRNA Refseq**

NM\_002305

**Protein Refseq**

NP\_002296

**MIM**

150570

**UniProt ID**

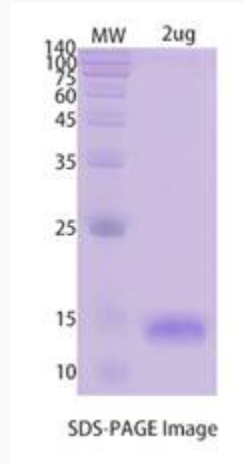
P09382

 Tel: 1-631-559-9269 1-516-512-3133

 Email: [info@creative-biomart.com](mailto:info@creative-biomart.com)  Fax: 1-631-938-8127

 45-1 Ramsey Road, Shirley, NY 11967, USA

**SDS-PAGE**



 Tel: 1-631-559-9269 1-516-512-3133

 Email: [info@creative-biomart.com](mailto:info@creative-biomart.com)  Fax: 1-631-938-8127

 45-1 Ramsey Road, Shirley, NY 11967, USA