

## Recombinant Human LGALS1 protein

Cat. No. LGALS1-669H Lot. No. (See product label)

### SPECIFICATION

<b>Product Overview</b>	Recombinant Human LGALS1 protein was expressed in Escherichia coli.
<b>Species</b>	Human
<b>Source</b>	E.coli
<b>ProteinLength</b>	134
<b>Description</b>	The galectins are a family of beta-galactoside-binding proteins implicated in modulating cell-cell and cell-matrix interactions. This gene product may act as an autocrine negative growth factor that regulates cell proliferation.
<b>Form</b>	Lyophilized from a 0.2µm filtered solution in PBS, pH 7.4, with 1 mM DTT.
<b>Bio-activity</b>	Fully biologically active when compared to standard. The biological activity determined by a chemotaxis bioassay using human blood monocytes is in a concentration range of 1.0-10 ng/ml.
<b>Molecular Mass</b>	Approximately 14.6 kDa, a single non-glycosylated polypeptide chain containing 134 amino acids.
<b>AA Sequence</b>	ACGLVASNLNLKPGECLRVRGEVAPDAKSFVLNLGKDSNNLCLHFNPRFNAHGDN TIVCNSKDGGAWGTEQREAVFPFQPGSVAEVCITFDQANLTVKLPDGYEFKFPNRL NLEAINYMAADGDFKIKCVAFD

 Tel: 1-631-559-9269 1-516-512-3133

 Email: [info@creative-biomart.com](mailto:info@creative-biomart.com)  Fax: 1-631-938-8127

 45-1 Ramsey Road, Shirley, NY 11967, USA

<b>Endotoxin</b>	Less than 0.1 EU/g of rHuGalectin-1 as determined by LAL method.
<b>Purity</b>	>95% by SDS-PAGE and HPLC analysis.
<b>Storage</b>	Use a manual defrost freezer and avoid repeated freeze-thaw cycles. 12 months from date of receipt, -20 to -70 centigrade as supplied. 1 month, 2 to 8 centigrade under sterile conditions after reconstitution. 3 months, -20 to -70 centigrade under sterile conditions after reconstitution.
<b>Reconstitution</b>	We recommend that this vial be briefly centrifuged prior to opening to bring the contents to the bottom. Reconstitute in sterile distilled water or aqueous buffer containing 0.1 % BSA to a concentration of 0.1-1.0 mg/mL. Stock solutions should be apportioned into working aliquots and stored at ≤-20 centigrade. Further dilutions should be made in appropriate buffered solutions.

## GENE INFORMATION

<b>Gene Name</b>	LGALS1
<b>Official Symbol</b>	LGALS1
<b>Synonyms</b>	LGALS1; lectin, galactoside-binding, soluble, 1; galectin-1; galectin 1; GBP; HBL; HPL; gal-1; HLBP14; galaptin; 14 kDa lectin; S-Lac lectin 1; lactose-binding lectin 1; 14 kDa laminin-binding protein; putative MAPK-activating protein PM12; beta-galactoside-binding lectin L-14-I; beta-galactoside-binding protein 14kDa; GAL1; DKFZp686E23103;
<b>Gene ID</b>	3956
<b>mRNA Refseq</b>	NM_002305

 Tel: 1-631-559-9269 1-516-512-3133

 Email: [info@creative-biomart.com](mailto:info@creative-biomart.com)  Fax: 1-631-938-8127

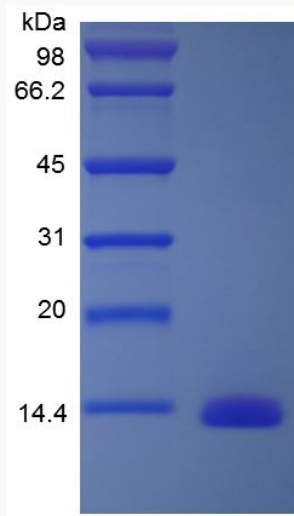
 45-1 Ramsey Road, Shirley, NY 11967, USA

**Protein Refseq** NP\_002296

**MIM** 150570

**UniProt ID** P09382

**SDS-PAGE of  
LGALS1-669H**



 Tel: 1-631-559-9269 1-516-512-3133

 Email: [info@creative-biomart.com](mailto:info@creative-biomart.com)  Fax: 1-631-938-8127

 45-1 Ramsey Road, Shirley, NY 11967, USA