

Recombinant Human LGALS1 protein, hFc-tagged

Cat. No. LGALS1-6754H Lot. No. (See product label)

SPECIFICATION

Product Overview	Recombinant Human LGALS1 protein(P09382)(Ala2-Asp135), fused with N-terminal hFc tag, was expressed in HEK293.
Species	Human
Source	HEK293
ProteinLength	Ala2-Asp135
Tag	N-hFc
Form	Supplied as 0.22µm filtered solution in PBS (pH 7.4).
Bio-activity	Immobilized Human Galectin 1, hFc Tag at 1ug/ml (100ul/Well) on the plate. Dose response curve for Biotinylated Anti-Galectin 1 Antibody, hFc Tag with the EC50 of 41.1ng/ml determined by ELISA.
Molecular Mass	The protein has a predicted MW of 41.9 kDa. Due to glycosylation, the protein migrates to 48-55 kDa based on Tris-Bis PAGE result.
Endotoxin	Less than 1EU per µg by the LAL method.
Purity	> 95% as determined by Tris-Bis PAGE;> 95% as determined by HPLC
Storage	Valid for 12 months from date of receipt when stored at -80°C. Recommend to aliquot

 Tel: 1-631-559-9269 1-516-512-3133

 Email: info@creative-biomart.com  Fax: 1-631-938-8127

 45-1 Ramsey Road, Shirley, NY 11967, USA

the protein into smaller quantities for optimal storage. Please do not repeated freeze-thaw cycles.

Reconstitution

It is recommended that sterile water be added to the vial to prepare a stock solution of 0.2 ug/ul. Centrifuge the vial at 4°C before opening to recover the entire contents.

GENE INFORMATION

Gene Name [LGALS1 lectin, galactoside-binding, soluble, 1 \[Homo sapiens \]](#)

Official Symbol [LGALS1](#)

Synonyms

LGALS1; lectin, galactoside-binding, soluble, 1; galectin-1; galectin 1; GBP; HBL; HPL; gal-1; HLBP14; galaptin; 14 kDa lectin; S-Lac lectin 1; lactose-binding lectin 1; 14 kDa laminin-binding protein; putative MAPK-activating protein PM12; beta-galactoside-binding lectin L-14-I; beta-galactoside-binding protein 14kDa; GAL1; DKFZp686E23103;

Gene ID [3956](#)

mRNA Refseq [NM_002305](#)

Protein Refseq [NP_002296](#)

MIM [150570](#)

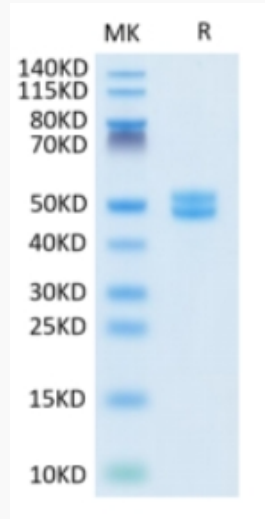
UniProt ID [P09382](#)

 Tel: 1-631-559-9269 1-516-512-3133

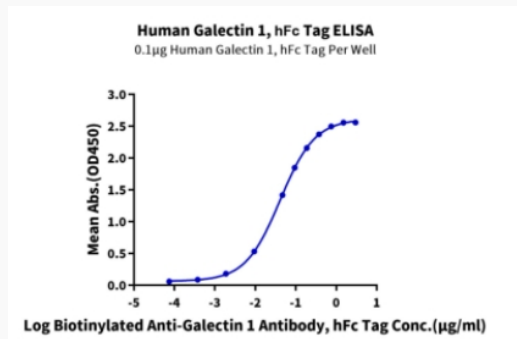
 Email: info@creative-biomart.com  Fax: 1-631-938-8127

 45-1 Ramsey Road, Shirley, NY 11967, USA

Tris-Bis PAGE



ELISA Data



 Tel: 1-631-559-9269 1-516-512-3133

 Email: info@creative-biomart.com  Fax: 1-631-938-8127

 45-1 Ramsey Road, Shirley, NY 11967, USA