

Recombinant Human LGALS14 Protein (Met1-Asp139), N-His tagged

Cat. No. LGALS14-3579H Lot. No. (See product label)

SPECIFICATION

Product Overview	Recombinant human LGALS14 (Met1-Asp139) protein fused with the N-terminal His tag was expressed in Mammalian cells.
Species	Human
Source	Mammalian Cells
ProteinLength	Met1-Asp139
Molecular Mass	15.29 kDa
Purity	>90 % as determined by SDS-PAGE.
Notes	For research use only.
Storage	Use a manual defrost freezer and avoid repeated freeze thaw cycles. Store at 2 to 8 centigrade for one week. Store at -20 to -80 centigrade for twelve months from the date of receipt.
Storage Buffer	Supplied as solution form in PBS or lyophilized from PBS.
Reconstitution	Reconstitute in sterile water for a stock solution.
Shipping	In general, proteins are provided as lyophilized powder/frozen liquid. They are

 Tel: 1-631-559-9269 1-516-512-3133

 Email: info@creative-biomart.com  Fax: 1-631-938-8127

 45-1 Ramsey Road, Shirley, NY 11967, USA

shipped out with dry ice/blue ice unless customers require otherwise.

GENE INFORMATION

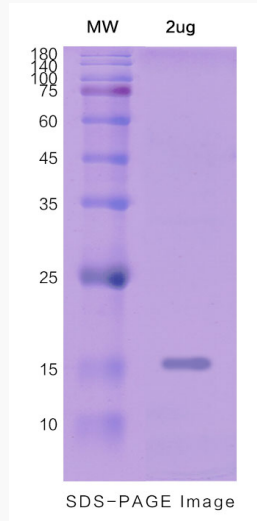
Gene Name	LGALS14 lectin, galactoside-binding, soluble, 14 [Homo sapiens (human)]
Official Symbol	LGALS14
Synonyms	LGALS14; lectin, galactoside-binding, soluble, 14; placental protein 13-like; CLC2; PPL13; gal-14; galectin-14; Charcot-Leyden crystal protein 2; placental protein 13-like protein; MGC22235;
Gene ID	56891
mRNA Refseq	NM_020129
Protein Refseq	NP_064514
MIM	607260
UniProt ID	Q8TCE9

 Tel: 1-631-559-9269 1-516-512-3133

 Email: info@creative-biomart.com  Fax: 1-631-938-8127

 45-1 Ramsey Road, Shirley, NY 11967, USA

SDS-PAGE



 Tel: 1-631-559-9269 1-516-512-3133

 Email: info@creative-biomart.com  Fax: 1-631-938-8127

 45-1 Ramsey Road, Shirley, NY 11967, USA