

Recombinant Human LGALS14 Protein, Myc/DDK-tagged, C13 and N15-labeled

Cat. No. LGALS14-3865H Lot. No. (See product label)

SPECIFICATION

Product Overview	LGALS14 MS Standard C13 and N15-labeled recombinant protein (NP_064514) with a C-terminal MYC/DDK tag, was expressed in HEK293 cells.
Species	Human
Source	HEK293
Description	This gene is predominantly expressed in placenta. The encoded protein belongs to the galectin (galaptin/S-lectin) family. The members of galectin family contain one or two carbohydrate recognition domains, which can bind beta-galactoside. Two alternatively spliced transcript variants encoding distinct isoforms have been observed.
Molecular Mass	16.1 kDa
AA Sequence	MSSLPVPYTLPLVSLPVGSCVIITGTPILTFVKDPQLEVNFYTGMDSDIAFQFRLHFG HPAIMNSRVFGIWRYYEKCYYLPFEDGKPFELCIYVRHKEYKVMVNGQRIYNFAHRF PPASVKMLQVLRDISLTRVLISDTRTRPLEQKLISEEDLAANDILDYKDDDDKV
Purity	> 80% as determined by SDS-PAGE and Coomassie blue staining
Stability	Stable for 3 months from receipt of products under proper storage and handling conditions.

 Tel: 1-631-559-9269 1-516-512-3133

 Email: info@creative-biomart.com  Fax: 1-631-938-8127

 45-1 Ramsey Road, Shirley, NY 11967, USA

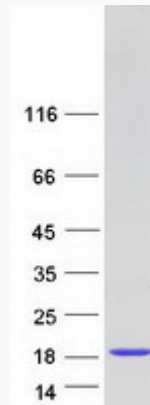
Storage	Store at -80 centigrade. Avoid repeated freeze-thaw cycles.
Concentration	50 µg/mL as determined by BCA
Storage Buffer	100 mM glycine, 25 mM Tris-HCl, pH 7.3.
GENE INFORMATION	
Gene Name	LGALS14 galectin 14 [Homo sapiens (human)]
Official Symbol	LGALS14
Synonyms	LGALS14; lectin, galactoside-binding, soluble, 14; placental protein 13-like; CLC2; PPL13; gal-14; galectin-14; Charcot-Leyden crystal protein 2; placental protein 13-like protein; MGC22235;
Gene ID	56891
mRNA Refseq	NM_020129
Protein Refseq	NP_064514
MIM	607260
UniProt ID	Q8TCE9

 Tel: 1-631-559-9269 1-516-512-3133

 Email: info@creative-biomart.com  Fax: 1-631-938-8127

 45-1 Ramsey Road, Shirley, NY 11967, USA

SDS-PAGE



 Tel: 1-631-559-9269 1-516-512-3133

 Email: info@creative-biomart.com  Fax: 1-631-938-8127

 45-1 Ramsey Road, Shirley, NY 11967, USA