

Recombinant Human LGALS2 Protein, Myc/DDK-tagged, C13 and N15-labeled

Cat. No. LGALS2-3681H **Lot. No.** (See product label)

SPECIFICATION

Product Overview	LGALS2 MS Standard C13 and N15-labeled recombinant protein (NP_006489) with a C-terminal MYC/DDK tag, was expressed in HEK293 cells.
Species	Human
Source	HEK293
Description	The protein encoded by this gene is a soluble beta-galactoside binding lectin. The encoded protein is found as a homodimer and can bind to lymphotoxin-alpha. A single nucleotide polymorphism in an intron of this gene can alter the transcriptional level of the protein, with a resultant increased risk of myocardial infarction.
Molecular Mass	14.6 kDa
AA Sequence	MTGELEVKNMDMKPGSTLKITGSIADGTDGFVINLGQGTDKLNLFNPRFSESTIVC NSLDGSNWGQEQRREDHLCFSPGSEVKFTVTFESDKFKVKLPDGHELTSFPNRLGHS HLSYLSVRGGFNMSSFKLKETRTRPLEQKLISEEDLAANDILDYKDDDDKV
Purity	> 80% as determined by SDS-PAGE and Coomassie blue staining
Stability	Stable for 3 months from receipt of products under proper storage and handling conditions.
Storage	Store at -80 centigrade. Avoid repeated freeze-thaw cycles.

 Tel: 1-631-559-9269 1-516-512-3133

 Email: info@creative-biomart.com  Fax: 1-631-938-8127

 45-1 Ramsey Road, Shirley, NY 11967, USA

Concentration 50 µg/mL as determined by BCA

Storage Buffer 100 mM glycine, 25 mM Tris-HCl, pH 7.3.

GENE INFORMATION

Gene Name LGALS2 galectin 2 [Homo sapiens (human)]

Official Symbol LGALS2

Synonyms LGALS2; lectin, galactoside-binding, soluble, 2; galectin-2; galectin 2; HL14; gal-2; S-Lac lectin 2; lactose-binding lectin 2; beta-galactoside-binding lectin L-14-II; MGC75071;

Gene ID 3957

mRNA Refseq NM_006498

Protein Refseq NP_006489

MIM 150571

UniProt ID P05162

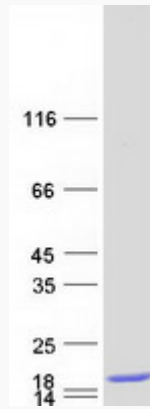
 Tel: 1-631-559-9269 1-516-512-3133

 Email: info@creative-biomart.com  Fax: 1-631-938-8127

 45-1 Ramsey Road, Shirley, NY 11967, USA



SDS-PAGE



Tel: 1-631-559-9269 1-516-512-3133

Email: info@creative-biomart.com Fax: 1-631-938-8127

45-1 Ramsey Road, Shirley, NY 11967, USA