

## Active Recombinant Pig LGALS2 protein, His-tagged

Cat. No. LGALS2-406P Lot. No. (See product label)

### SPECIFICATION

<b>Product Overview</b>	Active Recombinant Pig LGALS2 protein(Q29373)(1~123 aa), fused with N-terminal His tag, was expressed in E.coli.
<b>Species</b>	Pig
<b>Source</b>	E.coli
<b>ProteinLength</b>	1-123 aa
<b>Form</b>	Lyophilized from sterile PBS, pH7.4, containing 0.01% SKL, 1mM DTT, 5% Trehalose and Proclin300.
<b>Bio-activity</b>	<p>Galectin 2 (GAL2) belongs to the proto type group and consists of two homologous carbohydrate recognition domains (CRDs) resulting in multiple sugar binding sites. The expression of gal-2 has been shown to be involved in processes of angiogenesis and inflammation but was not analyzed before in preeclamptic (PE) placentas. It also can agglutinate red blood. In this case, chose rabbit erythrocyte (RaE) to assay its ability of agglutination. A general procedure for hemagglutination assay (or haemagglutination assay; HA) is as follows, two-fold dilute the recombinant pig GAL2 with 0.9% sodium chloride injection, add 50µL a serial dilution of GAL2 to each well of a U or V-bottom shaped 96-well microtiter plate. The final well serves as a negative control without GAL2, replace with 50µL 0.9% sodium chloride injection. Then add 50µL 1% rabbit erythrocyte to each well and mixed gently. The plate is incubated for 3 hours at room temperature. The results are shown. It was obvious that the minimal</p>

 Tel: 1-631-559-9269 1-516-512-3133

 Email: [info@creative-biomart.com](mailto:info@creative-biomart.com)  Fax: 1-631-938-8127

 45-1 Ramsey Road, Shirley, NY 11967, USA

effective concentration of GAL2 is 2.5µg/ml.

**Molecular Mass** 16.5kDa

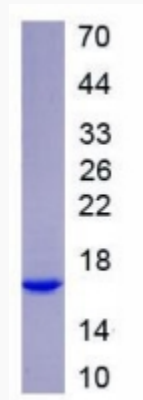
**Endotoxin** <1.0EU per 1µg (determined by the LAL method).

**Purity** > 90% as determined by SDS-PAGE.

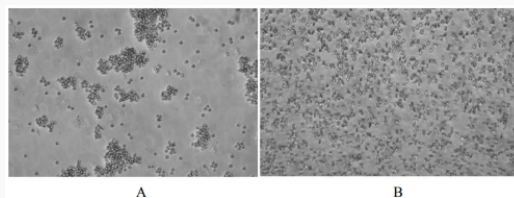
**Storage** Avoid repeated freeze/thaw cycles. Store at -20°C for 12 months. Aliquot and store at -80°C for 12 months.

**Reconstitution** Reconstitute in 10mM PBS (pH7.4) to a concentration of 0.1-1.0 mg/mL. Do not vortex.

**SDS-PAGE**



**Activity**



 Tel: 1-631-559-9269 1-516-512-3133

 Email: [info@creative-biomart.com](mailto:info@creative-biomart.com)  Fax: 1-631-938-8127

 45-1 Ramsey Road, Shirley, NY 11967, USA