

## Recombinant Human LGALS3 protein, His-tagged

Cat. No. LGALS3-1319H Lot. No. (See product label)

### SPECIFICATION

<b>Product Overview</b>	Recombinant Human LGALS3 protein(P17931)(Ala2-Ile250), fused with N-terminal His tag, was expressed in HEK293.
<b>Species</b>	Human
<b>Source</b>	HEK293
<b>ProteinLength</b>	Ala2-Ile250
<b>Tag</b>	N-His
<b>Form</b>	Supplied as 0.22µm filtered solution in 50mM HEPES, 150mM NaCl, 5mM EDTA, 2mM TCEP (pH 7.4).
<b>Bio-activity</b>	Immobilized Human Galectin 3, His Tag at 1 µg/ml (100 µl/Well) on the plate. Dose response curve for Anti-Galectin 3 Antibody, hFc Tag with the EC50 of 4.5 ng/ml determined by ELISA.
<b>Molecular Mass</b>	The protein has a predicted MW of 27.1 kDa. Due to glycosylation, the protein migrates to 35-45 kDa based on Tris-Bis PAGE result.
<b>Endotoxin</b>	Less than 1EU per µg by the LAL method.
<b>Purity</b>	> 95% as determined by Tris-Bis PAGE

 Tel: 1-631-559-9269 1-516-512-3133

 Email: [info@creative-biomart.com](mailto:info@creative-biomart.com)  Fax: 1-631-938-8127

 45-1 Ramsey Road, Shirley, NY 11967, USA

**Storage** Valid for 12 months from date of receipt when stored at -80°C; Recommend to aliquot the protein into smaller quantities for optimal storage. Please do not repeated freeze-thaw cycles.

**Reconstitution** It is recommended that sterile water be added to the vial to prepare a stock solution of 0.2 ug/ul. Centrifuge the vial at 4°C before opening to recover the entire contents.

## GENE INFORMATION

**Gene Name** [LGALS3 lectin, galactoside-binding, soluble, 3 \[ Homo sapiens \]](#)

**Official Symbol** [LGALS3](#)

**Synonyms** LGALS3; lectin, galactoside-binding, soluble, 3; LGALS2; galectin-3; galectin 3; GALIG; MAC 2; lectin L-29; 35 kDa lectin; MAC-2 antigen; IgE-binding protein; laminin-binding protein; galactose-specific lectin 3; carbohydrate-binding protein 35; L31; GAL3; MAC2; CBP35; GALBP;

**Gene ID** [3958](#)

**mRNA Refseq** [NM\\_001177388](#)

**Protein Refseq** [NP\\_001170859](#)

**MIM** [153619](#)

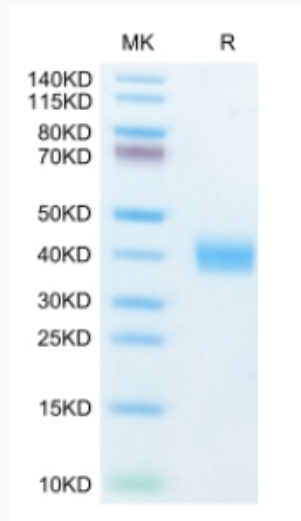
**UniProt ID** [P17931](#)

 Tel: 1-631-559-9269 1-516-512-3133

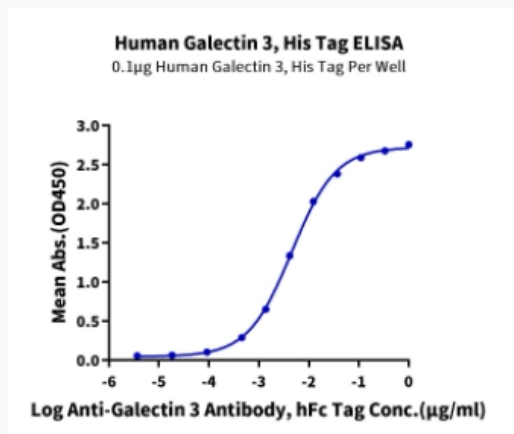
 Email: [info@creative-biomart.com](mailto:info@creative-biomart.com)  Fax: 1-631-938-8127

 45-1 Ramsey Road, Shirley, NY 11967, USA

**Tris-Bis PAGE**



**ELISA Data**



 Tel: 1-631-559-9269 1-516-512-3133

 Email: [info@creative-biomart.com](mailto:info@creative-biomart.com)  Fax: 1-631-938-8127

 45-1 Ramsey Road, Shirley, NY 11967, USA