

## Active Recombinant Human LGALS3 protein

Cat. No. LGALS3-2604H Lot. No. (See product label)

### SPECIFICATION

<b>Product Overview</b>	Recombinant Human Galectin-3/LGALS3 Protein is produced by E. coli expression system. The target protein is expressed with sequence (Ala2-Ile250) of human Galectin-3 (Accession #NP_002297.2).
<b>Species</b>	Human
<b>Source</b>	E.coli
<b>ProteinLength</b>	Ala2-Ile250
<b>Form</b>	Lyophilized from a 0.22 µm filtered solution of PBS, pH 7.4.
<b>Bio-activity</b>	Measured by its binding ability in a functional ELISA. Immobilized Human Galectin-3 at 1 µg/mL (100 µL/well) can bind Galectin-3/LGALS3 Rabbit mAb with a linear range of 0.24-35 ng/mL.
<b>Molecular Mass</b>	30 kDa
<b>Endotoxin</b>	< 0.1 EU/µg of the protein by LAL method.
<b>Purity</b>	> 97% by SDS-PAGE.
<b>Storage</b>	Store the lyophilized protein at -20°C to -80 °C for long term. After reconstitution, the protein solution is stable at -20 °C for 3 months, at 2-8 °C for up to 1 week.

 Tel: 1-631-559-9269 1-516-512-3133

 Email: [info@creative-biomart.com](mailto:info@creative-biomart.com)  Fax: 1-631-938-8127

 45-1 Ramsey Road, Shirley, NY 11967, USA

**Reconstitution** Reconstitute to a concentration of 0.1-0.5 mg/mL in sterile distilled water.

## GENE INFORMATION

**Gene Name** [LGALS3 lectin, galactoside-binding, soluble, 3 \[ Homo sapiens \]](#)

**Official Symbol** [LGALS3](#)

**Synonyms** [LGALS3](#); lectin, galactoside-binding, soluble, 3; [LGALS2](#); galectin-3; galectin 3; [GALIG](#); [MAC 2](#); lectin L-29; 35 kDa lectin; [MAC-2 antigen](#); [IgE-binding protein](#); [laminin-binding protein](#); [galactose-specific lectin 3](#); [carbohydrate-binding protein 35](#); [L31](#); [GAL3](#); [MAC2](#); [CBP35](#); [GALBP](#);

**Gene ID** [3958](#)

**mRNA Refseq** [NM\\_001177388](#)

**Protein Refseq** [NP\\_001170859](#)

**MIM** [153619](#)

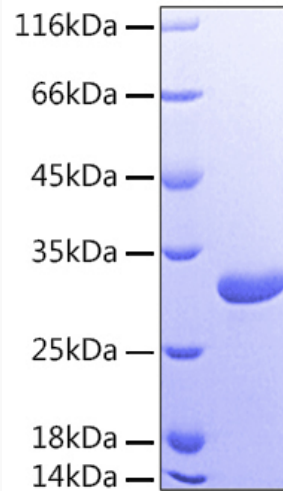
**UniProt ID** [P17931](#)

 Tel: 1-631-559-9269 1-516-512-3133

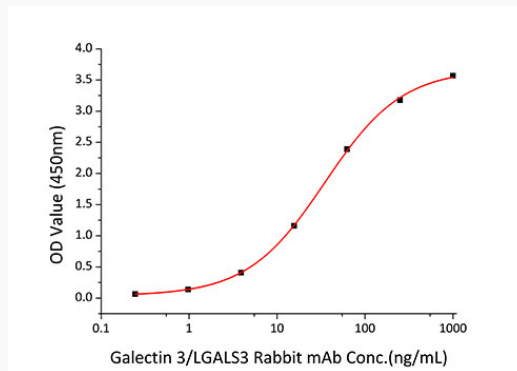
 Email: [info@creative-biomart.com](mailto:info@creative-biomart.com)  Fax: 1-631-938-8127

 45-1 Ramsey Road, Shirley, NY 11967, USA

**SDS-PAGE**



**Bio-activity**



 Tel: 1-631-559-9269 1-516-512-3133

 Email: [info@creative-biomart.com](mailto:info@creative-biomart.com)  Fax: 1-631-938-8127

 45-1 Ramsey Road, Shirley, NY 11967, USA