

# Active Recombinant Human LGALS3 Protein, His tagged

Cat. No. LGALS3-6914H Lot. No. (See product label)

## SPECIFICATION

<b>Product Overview</b>	Recombinant Galectin-3 protein (1-250 aa) with His tag was expressed in E. coli and purified by using conventional chromatography techniques.
<b>Species</b>	Human
<b>Source</b>	E. coli
<b>ProteinLength</b>	1-250 aa
<b>Description</b>	<p>This gene encodes a member of the galectin family of carbohydrate binding proteins. Members of this protein family have an affinity for beta-galactosides. The encoded protein is characterized by an N-terminal proline-rich tandem repeat domain and a single C-terminal carbohydrate recognition domain. This protein can self-associate through the N-terminal domain allowing it to bind to multivalent saccharide ligands. This protein localizes to the extracellular matrix, the cytoplasm and the nucleus. This protein plays a role in numerous cellular functions including apoptosis, innate immunity, cell adhesion and T-cell regulation. The protein exhibits antimicrobial activity against bacteria and fungi. Alternate splicing results in multiple transcript variants.</p>
<b>Form</b>	Liquid
<b>Bio-activity</b>	The ED50 for this effect is less or equal to 15 µg/mL. Measured by its ability to agglutinate human red blood cells.

 Tel: 1-631-559-9269 1-516-512-3133

 Email: [info@creative-biomart.com](mailto:info@creative-biomart.com)  Fax: 1-631-938-8127

 45-1 Ramsey Road, Shirley, NY 11967, USA

<b>Molecular Mass</b>	28.3 kDa
<b>AA Sequence</b>	MADNFSLHDALSGSGNPNPQGWPAGWGNQPAGAGGYPGASYPGAYPGQAPPGA YPGQAPPAYPGAPGAYPGAPAGVYPGPPSGPGAYPSSGQPSATGAYPATGPY GAPAGPLIVPYNLPLPGGVVPRMLITILGTVKPNANRIALDFQRGNDVAFHFNPRFNE NNRRVIVCNTKLDNNWGREERQSVFPFESGKPFKIQVLVEPDHFKVAVNDAHLLQY NHRVKKLNEISKLGISGDIDLTSASYTMI
<b>Purity</b>	> 95% by SDS-PAGE
<b>Applications</b>	SDS-PAGE, Bioactivity
<b>Note</b>	For research use only. This product is not intended or approved for human, diagnostics or veterinary use.
<b>Storage</b>	Can be stored at +2 to +8 centigrade for 1 week. For long term storage, aliquot and store at -20 to -80 centigrade. Avoid repeated freezing and thawing cycles.
<b>Storage Buffer</b>	20mM Tris-HCl buffer (pH 8.0) containing 10% glycerol, 1mM DTT, 0.1M NaCl
<b>Concentration</b>	0.5 mg/mL (determined by Bradford assay)
<b>Reference</b>	1. Barondes SH., et al. (1994) J Biol Chem. 269(33):20807-10. 2. Kadrofske MM., et al. (1998) Arch Biochem Biophys. 349(1):7-20.

## GENE INFORMATION

<b>Gene Name</b>	LGALS3 lectin, galactoside-binding, soluble, 3 [ Homo sapiens (human) ]
<b>Official Symbol</b>	LGALS3

 Tel: 1-631-559-9269 1-516-512-3133

 Email: [info@creative-biomart.com](mailto:info@creative-biomart.com)  Fax: 1-631-938-8127

 45-1 Ramsey Road, Shirley, NY 11967, USA

**Synonyms** LGALS3; lectin, galactoside-binding, soluble, 3; LGALS2; galectin-3; galectin 3; GALIG; MAC 2; lectin L-29; 35 kDa lectin; MAC-2 antigen; IgE-binding protein; laminin-binding protein; galactose-specific lectin 3; carbohydrate-binding protein 35; L31; GAL3; MAC2; CBP35; GALBP

**Gene ID** [3958](#)

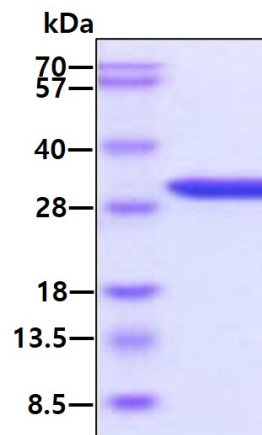
**mRNA Refseq** [NM\\_002306](#)

**Protein Refseq** [NP\\_002297](#)

**MIM** [153619](#)

**UniProt ID** [P17931](#)

**SDS-PAGE**



3 µg by SDS-PAGE under reducing condition and visualized by coomassie blue stain.

 Tel: 1-631-559-9269 1-516-512-3133

 Email: [info@creative-biomart.com](mailto:info@creative-biomart.com)  Fax: 1-631-938-8127

 45-1 Ramsey Road, Shirley, NY 11967, USA