

## Active Recombinant Human LGALS4 protein, His-tagged

Cat. No. LGALS4-10H Lot. No. (See product label)

### SPECIFICATION

<b>Product Overview</b>	Active Recombinant Human LGALS4 protein(Met1~Ile323), fused with N-terminal His tag, was expressed in E. coli.
<b>Species</b>	Human
<b>Source</b>	E.coli
<b>ProteinLength</b>	Met1~Ile323
<b>Tag</b>	N-His
<b>Form</b>	PBS, pH7.4, containing 0.01% SKL, 5% Trehalose.
<b>Bio-activity</b>	<p>Galectin-4(GAL4) is a protein that in humans is encoded by the LGALS4 gene. The galectins are a family of beta-galactoside-binding proteins implicated in modulating cell-cell and cell-matrix interactions. LGALS4 is an S-type lectin that is strongly underexpressed in colorectal cancer. In this case, we chose rabbit erythrocyte (RaE) to assay its ability of agglutination. A general procedure for hemagglutination assay (or haemagglutination assay; HA) is as follows, two-fold dilute the recombinant human GAL4 with 0.9% sodium chloride injection, add 50µL a serial dilution of GAL4 to each well of a U or V-bottom shaped 96-well microtiter plate. The final well serves as a negative control without GAL4, replace with 50µL 0.9% sodium chloride injection. Then add 50µL 1% rabbit erythrocyte to each well and mixed gently. The plate is incubated for 3 hours at room temperature. The minimal effective</p>

 Tel: 1-631-559-9269 1-516-512-3133

 Email: [info@creative-biomart.com](mailto:info@creative-biomart.com)  Fax: 1-631-938-8127

 45-1 Ramsey Road, Shirley, NY 11967, USA

concentration of GAL4 is 3.187µg/mL.

**Molecular Mass** 37.2kDa

**Endotoxin** <1.0EU per 1µg (determined by the LAL method)

**Purity** > 92%

**Storage** Avoid repeated freeze/thaw cycles. Store at 2-8°C for one month. Aliquot and store at -80°C for 12 months.

**Reconstitution** Reconstitute in 10mM PBS (pH7.4) to a concentration of 0.1-1.0 mg/mL. Do not vortex.

## GENE INFORMATION

**Gene Name** LGALS4 lectin, galactoside-binding, soluble, 4 [ Homo sapiens ]

**Official Symbol** LGALS4

**Synonyms** LGALS4; lectin, galactoside-binding, soluble, 4; galectin-4; GAL4; galectin 4; gal-4; antigen NY-CO-27; lactose-binding lectin 4; L-36 lactose-binding protein; L36LBP;

**Gene ID** 3960

**mRNA Refseq** NM\_006149

**Protein Refseq** NP\_006140

**MIM** 602518

 Tel: 1-631-559-9269 1-516-512-3133

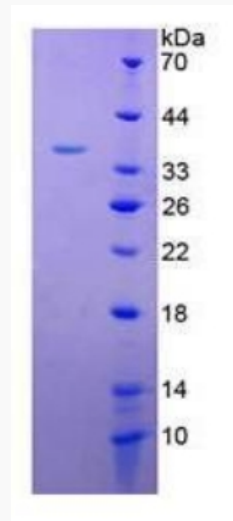
 Email: [info@creative-biomart.com](mailto:info@creative-biomart.com)  Fax: 1-631-938-8127

 45-1 Ramsey Road, Shirley, NY 11967, USA

UniProt ID

P56470

SDS-PAGE



 Tel: 1-631-559-9269 1-516-512-3133

 Email: [info@creative-biomart.com](mailto:info@creative-biomart.com)  Fax: 1-631-938-8127

 45-1 Ramsey Road, Shirley, NY 11967, USA