

## Active Recombinant Pig LGALS4 protein, His-tagged

Cat. No. LGALS4-415P Lot. No. (See product label)

### SPECIFICATION

<b>Product Overview</b>	Active Recombinant Pig LGALS4 protein(Q29058)(1~323 aa), fused with N-terminal His tag, was expressed in E.coli.
<b>Species</b>	Pig
<b>Source</b>	E.coli
<b>ProteinLength</b>	1-323 aa
<b>Form</b>	Lyophilized from sterile PBS, pH7.4, containing 0.01% SKL, 1mM DTT, 5% Trehalose and Proclin300.
<b>Bio-activity</b>	<p>Galectin-4(GAL4) is a protein that in humans is encoded by the LGALS4 gene. The galectins are a family of beta-galactoside-binding proteins implicated in modulating cell-cell and cell-matrix interactions. LGALS4 is an S-type lectin that is strongly underexpressed in colorectal cancer. In this case, we chose rabbit erythrocyte (RaE) to assay its ability of agglutination. A general procedure for hemagglutination assay (or haemagglutination assay; HA) is as follows, two-fold dilute the recombinant pig GAL4 with 0.9% sodium chloride injection, add 50µL a serial dilution of GAL4 to each well of a U or V-bottom shaped 96-well microtiter plate. The final well serves as a negative control without GAL4, replace with 50µL 0.9% sodium chloride injection. Then add 50µL 1% rabbit erythrocyte to each well and mixed gently. The plate is incubated for 3 hours at room temperature. The results are shown. It was obvious that the minimal effective concentration of GAL4 is 7.5 µg/mL.</p>

 Tel: 1-631-559-9269 1-516-512-3133

 Email: [info@creative-biomart.com](mailto:info@creative-biomart.com)  Fax: 1-631-938-8127

 45-1 Ramsey Road, Shirley, NY 11967, USA

<b>Molecular Mass</b>	39.6kDa
<b>Endotoxin</b>	<1.0EU per 1µg (determined by the LAL method).
<b>Purity</b>	> 95% as determined by SDS-PAGE.
<b>Storage</b>	Avoid repeated freeze/thaw cycles. Store at -20°C for 12 months. Aliquot and store at -80°C for 12 months.
<b>Reconstitution</b>	Reconstitute in 10mM PBS (pH7.4) to a concentration of 0.1-1.0 mg/mL. Do not vortex.

## GENE INFORMATION

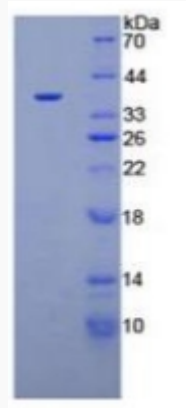
<b>Gene Name</b>	LGALS4 lectin, galactoside-binding, soluble, 4 [ <i>Sus scrofa</i> ]
<b>Official Symbol</b>	LGALS4
<b>Synonyms</b>	LGALS4; lectin, galactoside-binding, soluble, 4; galectin-4; gal-4; lactose-binding lectin 4; L-36 lactose binding protein; L-36 lactose-binding protein; lectin, galactoside-binding, soluble, 4 (galectin 4); L36LBP;
<b>Gene ID</b>	397041
<b>mRNA Refseq</b>	NM_213981
<b>Protein Refseq</b>	NP_999146

 Tel: 1-631-559-9269 1-516-512-3133

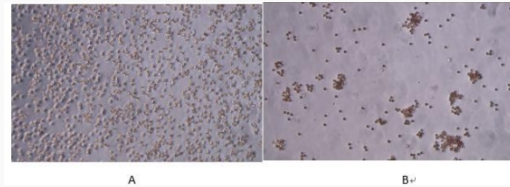
 Email: [info@creative-biomart.com](mailto:info@creative-biomart.com)  Fax: 1-631-938-8127

 45-1 Ramsey Road, Shirley, NY 11967, USA

**SDS-PAGE**



**Activity**



 Tel: 1-631-559-9269 1-516-512-3133

 Email: [info@creative-biomart.com](mailto:info@creative-biomart.com)  Fax: 1-631-938-8127

 45-1 Ramsey Road, Shirley, NY 11967, USA