

# Recombinant Human LGALS4 Protein, Myc/DDK-tagged, C13 and N15-labeled

Cat. No. LGALS4-4710H Lot. No. (See product label)

## SPECIFICATION

<b>Product Overview</b>	LGALS4 MS Standard C13 and N15-labeled recombinant protein (NP_006140) with a C-terminal MYC/DDK tag, was expressed in HEK293 cells.
<b>Species</b>	Human
<b>Source</b>	HEK293
<b>Description</b>	The galectins are a family of beta-galactoside-binding proteins implicated in modulating cell-cell and cell-matrix interactions. The expression of this gene is restricted to small intestine, colon, and rectum, and it is underexpressed in colorectal cancer.
<b>Molecular Mass</b>	35.8 kDa
<b>AA Sequence</b>	MAYVPAPGYQPTYNPTLPYYQPIPGGLNVGMSVYIQGVASEHMKRFFVNFVVGQDP GSDVAFHFNPRFDGWDKVVFNTLQGGKWGSEERKRSMPPFKKGAAFELVFIVLAEH YKVVVNGNPFYEYGHRLPLQMVTHLQVDGDLQLQSINFIGGQPLRPQGPPMMPY PGPGHCHQQLNSLPTMEGPPTFNPPVPYFGRLQGGLTARRTIIKGYVPPTGKSFAI NFKVGSSGDIALHINPRMGNGTVVRNSLLNGSWGSEEKITHNPFPGPQFFDLSIRC GLDRFKVYANGQHFLDFAHRLSAFQRVDTLEIQGDVTLASYVQITRTRPLEQKLISEED LAANDILDYKDDDDKV
<b>Purity</b>	> 80% as determined by SDS-PAGE and Coomassie blue staining

 Tel: 1-631-559-9269 1-516-512-3133

 Email: [info@creative-biomart.com](mailto:info@creative-biomart.com)  Fax: 1-631-938-8127

 45-1 Ramsey Road, Shirley, NY 11967, USA



<b>Stability</b>	Stable for 3 months from receipt of products under proper storage and handling conditions.
<b>Storage</b>	Store at -80 centigrade. Avoid repeated freeze-thaw cycles.
<b>Concentration</b>	50 µg/mL as determined by BCA
<b>Storage Buffer</b>	100 mM glycine, 25 mM Tris-HCl, pH 7.3.

## GENE INFORMATION

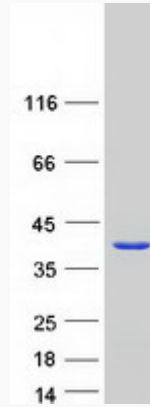
<b>Gene Name</b>	LGALS4 galectin 4 [ Homo sapiens (human) ]
<b>Official Symbol</b>	LGALS4
<b>Synonyms</b>	LGALS4; lectin, galactoside-binding, soluble, 4; galectin-4; GAL4; galectin 4; gal-4; antigen NY-CO-27; lactose-binding lectin 4; L-36 lactose-binding protein; L36LBP;
<b>Gene ID</b>	3960
<b>mRNA Refseq</b>	NM_006149
<b>Protein Refseq</b>	NP_006140
<b>MIM</b>	602518
<b>UniProt ID</b>	P56470

Tel: 1-631-559-9269 1-516-512-3133

Email: [info@creative-biomart.com](mailto:info@creative-biomart.com) Fax: 1-631-938-8127

45-1 Ramsey Road, Shirley, NY 11967, USA

**SDS-PAGE**



 Tel: 1-631-559-9269 1-516-512-3133

 Email: [info@creative-biomart.com](mailto:info@creative-biomart.com)  Fax: 1-631-938-8127

 45-1 Ramsey Road, Shirley, NY 11967, USA