

Recombinant Human LGALS7 Protein, Myc/DDK-tagged, C13 and N15-labeled

Cat. No. LGALS7-4263H **Lot. No.** (See product label)

SPECIFICATION

Product Overview	LGALS7 MS Standard C13 and N15-labeled recombinant protein (NP_002298) with a C-terminal MYC/DDK tag, was expressed in HEK293 cells.
Species	Human
Source	HEK293
Description	The galectins are a family of beta-galactoside-binding proteins implicated in modulating cell-cell and cell-matrix interactions. Differential and in situ hybridization studies indicate that this lectin is specifically expressed in keratinocytes and found mainly in stratified squamous epithelium. A duplicate copy of this gene (GeneID:653499) is found adjacent to, but on the opposite strand on chromosome 19.
Molecular Mass	14.9 kDa
AA Sequence	MSNVPHKSSLPEGIRPGTVLIRIRGLVPPNASRFHVNLLCGEEQGSDAALHFNPRLDT SEVVFNSKEQGSWGREERGPGVFPFQRGQPFEVLIASDDGFKAVVGDAQYHHFRH RLPLARVRLVEVGGDVQLDSVRIFRTRTRPLEQKLISEEDLAANDILDYKDDDDKV
Purity	> 80% as determined by SDS-PAGE and Coomassie blue staining
Stability	Stable for 3 months from receipt of products under proper storage and handling conditions.

 Tel: 1-631-559-9269 1-516-512-3133

 Email: info@creative-biomart.com  Fax: 1-631-938-8127

 45-1 Ramsey Road, Shirley, NY 11967, USA

Storage	Store at -80 centigrade. Avoid repeated freeze-thaw cycles.
----------------	---

Concentration	50 µg/mL as determined by BCA
----------------------	-------------------------------

Storage Buffer	100 mM glycine, 25 mM Tris-HCl, pH 7.3.
-----------------------	---

GENE INFORMATION

Gene Name	LGALS7 galectin 7 [Homo sapiens (human)]
------------------	--

Official Symbol	LGALS7
------------------------	--------

Synonyms	LGALS7; lectin, galactoside-binding, soluble, 7; galectin-7; GAL7; galectin 7; LGALS7A; PIG1; TP53I1;
-----------------	---

Gene ID	3963
----------------	------

mRNA Refseq	NM_002307
--------------------	-----------

Protein Refseq	NP_002298
-----------------------	-----------

MIM	600615
------------	--------

UniProt ID	P47929
-------------------	--------

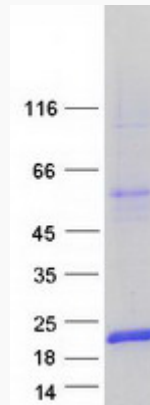
 Tel: 1-631-559-9269 1-516-512-3133

 Email: info@creative-biomart.com  Fax: 1-631-938-8127

 45-1 Ramsey Road, Shirley, NY 11967, USA



SDS-PAGE



Tel: 1-631-559-9269 1-516-512-3133

Email: info@creative-biomart.com Fax: 1-631-938-8127

45-1 Ramsey Road, Shirley, NY 11967, USA