

# Active Recombinant Human LGALS8 Protein (Met2-Trp317), N-His tagged, Animal-free, Carrier-free

Cat. No. LGALS8-194H Lot. No. (See product label)

## SPECIFICATION

<b>Product Overview</b>	Recombinant Human LGALS8 Protein (Met2-Trp317) with N-His tag was expressed in E. coli and Animal-free as well as Carrier-free.
<b>Species</b>	Human
<b>Source</b>	E.coli
<b>ProteinLength</b>	Met2-Trp317
<b>Description</b>	<p>Galectin-8 (Gal-8) is a lectin family member and is one of the tandem repeat-type galectins containing two carbohydrate recognition domains (CRD) connected by a linker region in a single peptide chain. The CRD is responsible for <math>\beta</math>-galactoside binding, and the binding partners for galectin-8 have been identified, including CD44 and a subset of integrins. Galectin-8 and integrins form complexes, subsequently leading to phosphorylation of paxillin and focal adhesion kinase (FAK), which activates signal pathways including MAPK-ERK and PI3K-AKT pathways. Galectin-8 is constitutively presented in the Liver, kidney, cardiac muscle, lung, and brain. Galectin-8 serves as an immunosuppressive protective role against autoimmune CNS inflammation, regulating the balance of Th17 and Th1 polarization.</p>
<b>Form</b>	Lyophilized
<b>Bio-activity</b>	Measured by its ability to agglutinate human red blood cells. The ED50 for this effect is < 8

 Tel: 1-631-559-9269 1-516-512-3133

 Email: [info@creative-biomart.com](mailto:info@creative-biomart.com)  Fax: 1-631-938-8127

 45-1 Ramsey Road, Shirley, NY 11967, USA



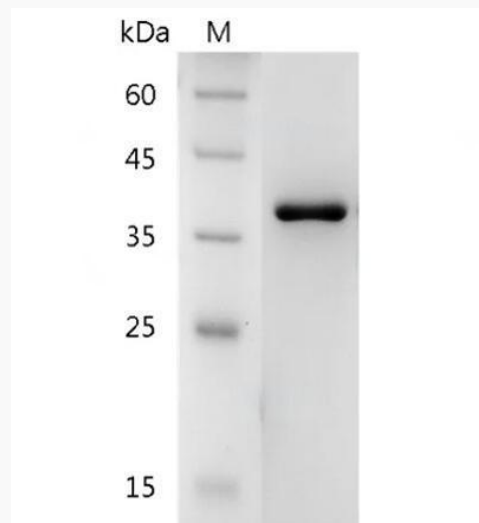
	µg/mL.
<b>Molecular Mass</b>	The protein has a calculated MW of 36.6 kDa. The protein migrates as 34 kDa under reducing condition (SDS-PAGE analysis).
<b>Endotoxin</b>	< 0.1 EU/µg of the protein by the LAL method.
<b>Purity</b>	>98% as determined by SDS-PAGE analysis.
<b>Storage</b>	This product is stable after storage at: -20 centigrade for 12 months in lyophilized state from date of receipt. -20 or -80 centigrade for 1 month under sterile conditions after reconstitution. Avoid repeated freeze/thaw cycles.
<b>Storage Buffer</b>	Lyophilized from a 0.2 µm filtered solution of PBS, pH 7.4.
<b>Reconstitution</b>	It is recommended to reconstitute the lyophilized protein in sterile H2O to a concentration not less than 200 µg/mL and incubate the stock solution for at least 20 min to ensure sufficient re-dissolved.
<b>Shipping</b>	The product is shipped with polar packs. Upon receipt, store it immediately at -20 centigrade or lower for long term storage.

## GENE INFORMATION

<b>Gene Name</b>	LGALS8 lectin, galactoside-binding, soluble, 8 [ Homo sapiens (human) ]
<b>Official Symbol</b>	LGALS8
<b>Synonyms</b>	LGALS8; lectin, galactoside-binding, soluble, 8; galectin-8; galectin 8; PCTA 1; galectin-8g; Po66 carbohydrate binding protein; po66 carbohydrate-binding protein;

Tel: 1-631-559-9269 1-516-512-3133  
Email: [info@creative-biomart.com](mailto:info@creative-biomart.com) Fax: 1-631-938-8127  
45-1 Ramsey Road, Shirley, NY 11967, USA

prostate carcinoma tumor antigen 1; Gal-8; PCTA1; PCTA-1; Po66-CBP;

**Gene ID** 3964**mRNA Refseq** NM\_006499**Protein Refseq** NP\_006490**MIM** 606099**UniProt ID** O00214**SDS-PAGE analysis  
of recombinant  
human Galectin-8.** Tel: 1-631-559-9269 1-516-512-3133 Email: [info@creative-biomart.com](mailto:info@creative-biomart.com)  Fax: 1-631-938-8127 45-1 Ramsey Road, Shirley, NY 11967, USA