

Active Recombinant Rat LGALS8 protein, His-tagged

Cat. No. LGALS8-3225R Lot. No. (See product label)

SPECIFICATION

Product Overview	Active Recombinant Rat LGALS8 protein(Q62665)(151~316 aa), fused with N-terminal His tag, was expressed in E.coli.
Species	Rat
Source	E.coli
ProteinLength	151-316 aa
Form	Lyophilized from sterile 20mM Tris, 150mM NaCl, pH8.0, containing 1mM EDTA, 1mM DTT, 0.01% SKL, 5% Trehalose and Proclin300.
Bio-activity	<p>Galectin 8 (GAL8), also known as prostate carcinoma tumor antigen 1 (PCTA1) in human, is a tandem repeat-type galectin. is a member of the lectin family, of which 14 mammalian galectins have been identified. It is also a member of the beta-galactoside-binding protein family that plays an important role in cell-cell adhesion, cell-matrix interactions, macrophage activation, angiogenesis, metastasis, apoptosis. In this case, we chose rabbit erythrocyte (RaE) to assay its ability of agglutination. A general procedure for hemagglutination assay (or haemagglutination assay; HA) is as follows, two-fold dilute the recombinant Rat GAL8 with 0.9% sodium chloride injection, add 50µL a serial dilution of GAL8 to each well of a U or V-bottom shaped 96-well microtiter plate. The final well serves as a negative control with no GAL8, replace with 50µL 0.9% sodium chloride injection. Then add 50µL 1% rabbit erythrocyte to each well and mixed gently. The plate is incubated for 3 hours at room</p>

 Tel: 1-631-559-9269 1-516-512-3133

 Email: info@creative-biomart.com  Fax: 1-631-938-8127

 45-1 Ramsey Road, Shirley, NY 11967, USA

temperature. The results are shown. It was obvious that the minimal effective concentration of GAL8 is 1.5625 µg/mL.

Molecular Mass	22.4kDa
Endotoxin	<1.0EU per 1µg (determined by the LAL method).
Purity	> 95% as determined by SDS-PAGE.
Storage	Avoid repeated freeze/thaw cycles. Store at -20°C for 12 months. Aliquot and store at -80°C for 12 months.
Reconstitution	Reconstitute in 20mM Tris, 150mM NaCl (pH8.0) to a concentration of 0.1-1.0 mg/mL. Do not vortex.

GENE INFORMATION

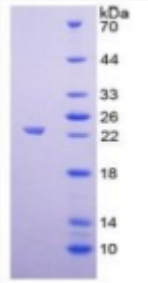
Gene Name	Lgals8 lectin, galactoside-binding, soluble, 8 [<i>Rattus norvegicus</i>]
Official Symbol	LGALS8
Synonyms	LGALS8; lectin, galactoside-binding, soluble, 8; galectin-8; RL-30; gal-8; 30 kDa S-type lectin; lectin, galactose binding, soluble 8;
Gene ID	116641
mRNA Refseq	NM_053862
Protein Refseq	NP_446314

 Tel: 1-631-559-9269 1-516-512-3133

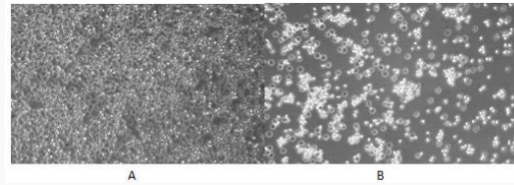
 Email: info@creative-biomart.com  Fax: 1-631-938-8127

 45-1 Ramsey Road, Shirley, NY 11967, USA

SDS-PAGE



Activity



 Tel: 1-631-559-9269 1-516-512-3133

 Email: info@creative-biomart.com  Fax: 1-631-938-8127

 45-1 Ramsey Road, Shirley, NY 11967, USA