

Recombinant Human LGALS8 Protein, Myc/DDK-tagged, C13 and N15-labeled

Cat. No. LGALS8-4389H **Lot. No.** (See product label)

SPECIFICATION

Product Overview	LGALS8 MS Standard C13 and N15-labeled recombinant protein (NP_006490) with a C-terminal MYC/DDK tag, was expressed in HEK293 cells.
Species	Human
Source	HEK293
Description	This gene encodes a member of the galectin family. Galectins are beta-galactoside-binding animal lectins with conserved carbohydrate recognition domains. The galectins have been implicated in many essential functions including development, differentiation, cell-cell adhesion, cell-matrix interaction, growth regulation, apoptosis, and RNA splicing. This gene is widely expressed in tumoral tissues and seems to be involved in integrin-like cell interactions. Alternatively spliced transcript variants encoding different isoforms have been identified.
Molecular Mass	40.2 kDa
AA Sequence	MMLSLNNLQNIINYNPVIFVGTIPDQLDPGTLIVIRGHVPSDADRFQVDLQNGSSMKP RADVAFHFNPRFKRAGCIVCNTLINEKWGREEITYDTPFKREKSFEIVIMVLKDKFQV AVNGKHTLLYGHRIGPEKIDTLGIYGKVNHSIGFSFSSDLQSTQASSLELTEISRENV PKSGTPQLPSNRGGDISKIAPRTVYTKSKDSTVNHTLTCTKIPPMNYVSKRLPFAARL NTPMGPGRVTVVVKGEVNANAKSFNVDLLAGKSKDIALHLNPRLNIAKAFVRNSFLQES WGEEERNITSFPFSPGMYFEMIIYCDVREFKVAVNGVHSLEYKHRFKELSSIDTLEIN

 Tel: 1-631-559-9269 1-516-512-3133

 Email: info@creative-biomart.com  Fax: 1-631-938-8127

 45-1 Ramsey Road, Shirley, NY 11967, USA

GDHLLLEVRSWTRTRPLEQKLISEEDLAANDILDYKDDDDKV

Purity > 80% as determined by SDS-PAGE and Coomassie blue staining

Stability Stable for 3 months from receipt of products under proper storage and handling conditions.

Storage Store at -80 centigrade. Avoid repeated freeze-thaw cycles.

Concentration 50 µg/mL as determined by BCA

Storage Buffer 100 mM glycine, 25 mM Tris-HCl, pH 7.3.

GENE INFORMATION

Gene Name [LGALS8 galectin 8 \[Homo sapiens \(human\) \]](#)

Official Symbol [LGALS8](#)

Synonyms LGALS8; lectin, galactoside-binding, soluble, 8; galectin-8; galectin 8; PCTA 1; galectin-8g; Po66 carbohydrate binding protein; po66 carbohydrate-binding protein; prostate carcinoma tumor antigen 1; Gal-8; PCTA1; PCTA-1; Po66-CBP;

Gene ID [3964](#)

mRNA Refseq [NM_006499](#)

Protein Refseq [NP_006490](#)

MIM [606099](#)

 Tel: 1-631-559-9269 1-516-512-3133

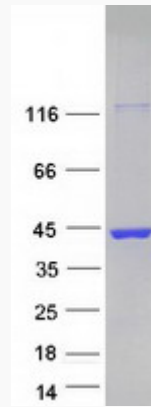
 Email: info@creative-biomart.com  Fax: 1-631-938-8127

 45-1 Ramsey Road, Shirley, NY 11967, USA

UniProt ID

O00214

SDS-PAGE



 Tel: 1-631-559-9269 1-516-512-3133

 Email: info@creative-biomart.com  Fax: 1-631-938-8127

 45-1 Ramsey Road, Shirley, NY 11967, USA