

## Recombinant Human LGALS9 protein, His-tagged

Cat. No. LGALS9-4643H Lot. No. (See product label)

### SPECIFICATION

<b>Product Overview</b>	Recombinant Human LGALS9 protein(O00182-2)(Ala2-Thr323), fused with N-terminal His tag, was expressed in HEK293.
<b>Species</b>	Human
<b>Source</b>	HEK293
<b>ProteinLength</b>	Ala2-Thr323
<b>Tag</b>	N-His
<b>Form</b>	Lyophilized from 0.22µm filtered solution in PBS (pH 7.4). Normally 5% trehalose is added as protectant before lyophilization.
<b>Molecular Mass</b>	The protein has a predicted MW of 36.9 kDa. Due to glycosylation, the protein migrates to 60-68 kDa based on Tris-Bis PAGE result.
<b>Endotoxin</b>	Less than 1EU per µg by the LAL method.
<b>Purity</b>	> 95% as determined by Tris-Bis PAGE
<b>Storage</b>	Reconstituted protein stable at -80°C for 12 months, 4°C for 1 week. Use a manual defrost freezer and avoid repeated freeze-thaw cycles.
<b>Reconstitution</b>	Centrifuge tubes before opening. Reconstituting to a concentration more than 100

 Tel: 1-631-559-9269 1-516-512-3133

 Email: [info@creative-biomart.com](mailto:info@creative-biomart.com)  Fax: 1-631-938-8127

 45-1 Ramsey Road, Shirley, NY 11967, USA

µg/ml is recommended. Dissolve the lyophilized protein in distilled water.

## GENE INFORMATION

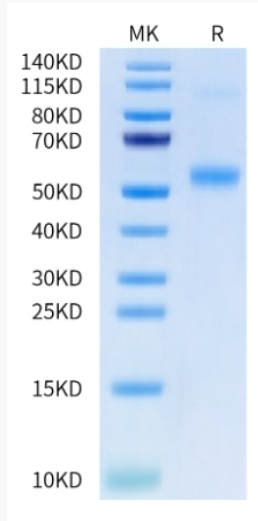
<b>Gene Name</b>	LGALS9 lectin, galactoside-binding, soluble, 9 [ Homo sapiens ]
<b>Official Symbol</b>	LGALS9
<b>Synonyms</b>	LGALS9; lectin, galactoside-binding, soluble, 9; galectin-9; galectin 9; LGALS9A; gal-9; ecalectin; tumor antigen HOM-HD-21; urate transporter/channel protein; HUAT; MGC117375; MGC125973; MGC125974;
<b>Gene ID</b>	3965
<b>mRNA Refseq</b>	NM_002308
<b>Protein Refseq</b>	NP_002299
<b>MIM</b>	601879
<b>UniProt ID</b>	O00182

 Tel: 1-631-559-9269 1-516-512-3133

 Email: [info@creative-biomart.com](mailto:info@creative-biomart.com)  Fax: 1-631-938-8127

 45-1 Ramsey Road, Shirley, NY 11967, USA

**Tris-Bis PAGE**



 Tel: 1-631-559-9269 1-516-512-3133

 Email: [info@creative-biomart.com](mailto:info@creative-biomart.com)  Fax: 1-631-938-8127

 45-1 Ramsey Road, Shirley, NY 11967, USA