

Recombinant Human LGMN Protein, Myc/DDK-tagged, C13 and N15-labeled

Cat. No. LGMN-3669H **Lot. No.** (See product label)

SPECIFICATION

Product Overview	LG MN MS Standard C13 and N15-labeled recombinant protein (NP_005597) with a C-terminal MYC/DDK tag, was expressed in HEK293 cells.
Species	Human
Source	HEK293
Description	<p>This gene encodes a cysteine protease that has a strict specificity for hydrolysis of asparaginyl bonds. This enzyme may be involved in the processing of bacterial peptides and endogenous proteins for MHC class II presentation in the lysosomal/endosomal systems. Enzyme activation is triggered by acidic pH and appears to be autocatalytic. Protein expression occurs after monocytes differentiate into dendritic cells. A fully mature, active enzyme is produced following lipopolysaccharide expression in mature dendritic cells. Overexpression of this gene may be associated with the majority of solid tumor types. This gene has a pseudogene on chromosome 13. Several alternatively spliced transcript variants have been described, but the biological validity of only two has been determined. These two variants encode the same isoform.</p>
Molecular Mass	49.4 kDa
AA Sequence	MVWKVAVFLSVALGIGAIPIDDPEDGGKHWVVIVAGSNGWYNYRHQADACHAYQIIH RNGIPDEQIVMMYDDIAYSEDNPTPGIVINRPNGTDVYQGVPKDYTGEDVTPQNFL

 Tel: 1-631-559-9269 1-516-512-3133

 Email: info@creative-biomart.com  Fax: 1-631-938-8127

 45-1 Ramsey Road, Shirley, NY 11967, USA



AVLRGDAEAVKIGSGKVLKSGPQDHVFIYFTDHGSGTGILVFPNEDLHVKDLNETIHY
MYKHKMYRKMVFYIEACESGSMNHLDPNINVYATTAANPRESSYACYYDEKRSTY
LGDWYSVNWMEDSDVEDLTKETLHKQYHLVKSHTNTSHVMQYGNKTISTMKVMQF
QGMKRKASSPVPLPPVTHLDLTPSPDVPLTIMKRKLMNTNDLEESRQLTEEIQRHLD
ARHLIEKSVRKIVSLLAASEAEVEQLLSERAPLTGHSCYPEALLHFRTHCFNWHSPY
EYALRHLYVLVNLCEKPYPLHRIKLSMDHVCLGHYSGPTRTRPLEQKLISEEDLAAND
ILDYKDDDDKV

Purity > 80% as determined by SDS-PAGE and Coomassie blue staining

Stability Stable for 3 months from receipt of products under proper storage and handling conditions.

Storage Store at -80 centigrade. Avoid repeated freeze-thaw cycles.

Concentration 50 µg/mL as determined by BCA

Storage Buffer 100 mM glycine, 25 mM Tris-HCl, pH 7.3.

GENE INFORMATION

Gene Name LGMN legumain [[Homo sapiens \(human\)](#)]

Official Symbol [LGMN](#)

Synonyms LGMN; legumain; protease, cysteine, 1 (legumain), PRSC1; LGMN1; cysteine protease 1; protease, cysteine 1; asparaginyl endopeptidase; protease, cysteine, 1 (legumain); AEP; PRSC1;

Gene ID [5641](#)

Tel: 1-631-559-9269 1-516-512-3133

Email: info@creative-biomart.com Fax: 1-631-938-8127

45-1 Ramsey Road, Shirley, NY 11967, USA

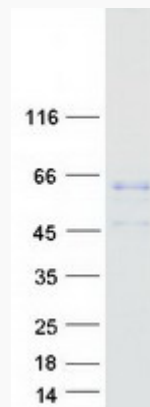
mRNA Refseq [NM_005606](#)

Protein Refseq [NP_005597](#)

MIM [602620](#)

UniProt ID [Q99538](#)

SDS-PAGE



 Tel: 1-631-559-9269 1-516-512-3133

 Email: info@creative-biomart.com  Fax: 1-631-938-8127

 45-1 Ramsey Road, Shirley, NY 11967, USA