

Recombinant Human LGR5 Protein (22-561 aa), His-tagged

Cat. No. LGR5-1441H Lot. No. (See product label)

SPECIFICATION

Product Overview	Recombinant Human LGR5 Protein (22-561 aa) is produced by Yeast expression system. This protein is fused with a 6xHis tag at the N-terminal. Research Area: Cancer. Protein Description: Partial.
Species	Human
Source	Yeast
ProteinLength	22-561 aa
Description	Receptor for R-spondins that potentiates the canonical Wnt signaling pathway and acts as a st cell marker of the intestinal epithelium and the hair follicle. Upon binding to R-spondins (RSPO1, RSPO2, RSPO3 or RSPO4), associates with phosphorylated LRP6 and frizzled receptors that are activated by Extracellular domain Wnt receptors, triggering the canonical Wnt signaling pathway to increase expression of target genes. In contrast to classical G-protein coupled receptors, does not activate heterotrimeric G-proteins to transduce the signal. Involved in the development and/or maintenance of the adult intestinal st cells during postbryonic development.
Form	Tris-based buffer,50% glycerol
Molecular Mass	62.4 kDa
AA Sequence	GSSPRSGVLLRGCPHCHCEPDGRMLLRVDCSDLGLSELPSNLSVFVTSYLDLSMNN ISQLLPNPLPSLRFLEELRLAGNALTYIPKGAFTGLYSLKVLMLQNNQLRHVPTEALQ

 Tel: 1-631-559-9269 1-516-512-3133

 Email: info@creative-biomart.com  Fax: 1-631-938-8127

 45-1 Ramsey Road, Shirley, NY 11967, USA

NLRSLQSLRLDANHISYVPPSCFSGLHSLRHLWLDDNALTEIPVQAFRSLQAMTL
 ALNKIHHIPDYAFGNLSSLVVLHLHNNRIHSLGKKCFDGLHSLETLDLNYNNLDEFPT
 AIRTLSNLKELGFHSNNIRSIPEKAFVGNPSLITIHFYDNPIQFVGRSAFQHLPELRTL
 LNGASQITEFPDLTGTANLESLLTGAQISSLPQTVCNQLPNLQVLDLSYNLLEDLPS
 FSVCQKLQKIDLRHNEIYEIKVDTFQQLLSLRSNLAWNKIAIHPNAFSTLPSLIKLDLS
 SNLLSSFPITGLHGLTHLKLGTGNHALQSLISSENFPELKVIEMPYAYQCCAFGVCENA
 YKISNQWNKGDNSSMDDLHKKDAGMFQAQDERDLEDFLDFEEDLKALHSVQCSP
 SPGPFKPCHELLLDGWLIR

Purity > 90% as determined by SDS-PAGE.

Notes Repeated freezing and thawing is not recommended. Store working aliquots at 4 centigrade for up to one week.

Storage The shelf life is related to many factors, storage state, buffer ingredients, storage temperature and the stability of the protein itself. Generally, the shelf life of liquid form is 6 months at -20 centigrade/-80 centigrade. The shelf life of lyophilized form is 12 months at -20 centigrade/-80 centigrade.

Concentration A hardcopy of COA with reconstitution instruction is sent along with the products.

GENE INFORMATION

Gene Name [LGR5 leucine-rich repeat containing G protein-coupled receptor 5 \[Homo sapiens \]](#)

Official Symbol [LGR5](#)

Synonyms LGR5; FEX; HG38; GPR49; GPR67; GRP49; MGC117008;

Gene ID [8549](#)

 Tel: 1-631-559-9269 1-516-512-3133

 Email: info@creative-biomart.com  Fax: 1-631-938-8127

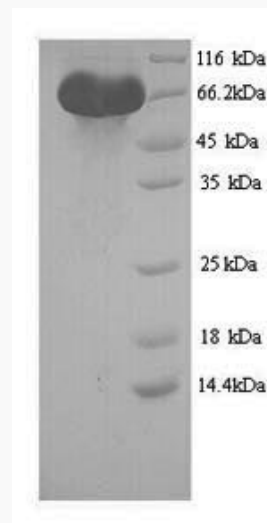
 45-1 Ramsey Road, Shirley, NY 11967, USA

mRNA Refseq [NM_003667](#)

Protein Refseq [NP_003658](#)

MIM [606667](#)

UniProt ID [O75473](#)



(Tris-Glycine gel) Discontinuous SDS-PAGE (reduced) with 5% enrichment gel and 15% separation gel.

 Tel: 1-631-559-9269 1-516-512-3133

 Email: info@creative-biomart.com  Fax: 1-631-938-8127

 45-1 Ramsey Road, Shirley, NY 11967, USA