

Recombinant Human LGR5 protein, His-tagged

Cat. No. LGR5-1522H Lot. No. (See product label)

SPECIFICATION

Product Overview	Recombinant Human LGR5 protein(O75473)(22-561aa), fused to C-terminal His tag, was expressed in Insect cell.
Species	Human
Source	Insect Cells
ProteinLength	22-561aa
Form	If the delivery form is liquid, the default storage buffer is Tris/PBS-based buffer, 5%-50% glycerol. If the delivery form is lyophilized powder, the buffer before lyophilization is Tris/PBS-based buffer, 6% Trehalose, pH 8.0.
Molecular Mass	66 kDa
Purity	Greater than 85% as determined by SDS-PAGE.
Storage	Store at -20°C/-80°C upon receipt, aliquoting is necessary for mutiple use. Avoid repeated freeze-thaw cycles.
Reconstitution	It is recommended that sterile water be added to the vial to prepare a stock solution of 0.2 ug/ul. Centrifuge the vial at 4°C before opening to recover the entire contents.

GENE INFORMATION

 Tel: 1-631-559-9269 1-516-512-3133

 Email: info@creative-biomart.com  Fax: 1-631-938-8127

 45-1 Ramsey Road, Shirley, NY 11967, USA

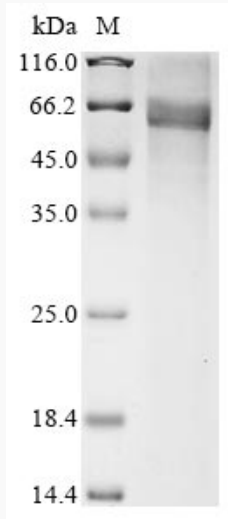
Gene Name	LGR5 leucine-rich repeat containing G protein-coupled receptor 5 [Homo sapiens]
Official Symbol	LGR5
Synonyms	LGR5; leucine-rich repeat containing G protein-coupled receptor 5; G protein coupled receptor 49 , GPR49, GPR67, leucine rich repeat containing G protein coupled receptor 5; leucine-rich repeat-containing G-protein coupled receptor 5; FEX; HG38; G-protein coupled receptor 49; G-protein coupled receptor 67; G-protein coupled receptor HG38; orphan G protein-coupled receptor HG38; leucine-rich repeat-containing G protein-coupled receptor 5; GPR49; GPR67; GRP49; MGC117008;
Gene ID	8549
mRNA Refseq	NM_003667
Protein Refseq	NP_003658
MIM	606667
UniProt ID	O75473

 Tel: 1-631-559-9269 1-516-512-3133

 Email: info@creative-biomart.com  Fax: 1-631-938-8127

 45-1 Ramsey Road, Shirley, NY 11967, USA

SDS-PAGE



 Tel: 1-631-559-9269 1-516-512-3133

 Email: info@creative-biomart.com  Fax: 1-631-938-8127

 45-1 Ramsey Road, Shirley, NY 11967, USA