

Recombinant Human LGR5 protein, hFc-tagged

Cat. No. LGR5-1624H Lot. No. (See product label)

SPECIFICATION

Product Overview	Recombinant Human LGR5 protein(O75473-1)(Gly22-Pro543), fused with C-terminal hFc tag, was expressed in HEK293.
Species	Human
Source	C-hFc
ProteinLength	Gly22-Pro543
Tag	C-hFc
Form	Supplied as 0.22µm filtered solution in 20mM PB, 300mM NaCl, 5mM DTT, 100mM L-Arginine (pH 7.4).
Bio-activity	Human LGR-5, hFc Tag captured on CM5 Chip via Protein A can bind Human R-Spondin 3, His Tag with an affinity constant of 0.59 nM as determined in SPR assay (Biacore T200).
Molecular Mass	The protein has a predicted MW of 85 kDa. Due to glycosylation, the protein migrates to 110-120 kDa based on Tris-Bis PAGE result.
Endotoxin	Less than 1EU per µg by the LAL method.
Purity	> 95% as determined by Tris-Bis PAGE; > 95% as determined by HPLC.

 Tel: 1-631-559-9269 1-516-512-3133

 Email: info@creative-biomart.com  Fax: 1-631-938-8127

 45-1 Ramsey Road, Shirley, NY 11967, USA

Storage Valid for 12 months from date of receipt when stored at -80°C.;Recommend to aliquot the protein into smaller quantities for optimal storage. Please do not repeated freeze-thaw cycles.

Reconstitution It is recommended that sterile water be added to the vial to prepare a stock solution of 0.2 ug/ul. Centrifuge the vial at 4°C before opening to recover the entire contents.

GENE INFORMATION

Gene Name LGR5 leucine-rich repeat containing G protein-coupled receptor 5 [Homo sapiens]

Official Symbol LGR5

Synonyms LGR5; leucine-rich repeat containing G protein-coupled receptor 5; G protein coupled receptor 49 , GPR49, GPR67, leucine rich repeat containing G protein coupled receptor 5; leucine-rich repeat-containing G-protein coupled receptor 5; FEX; HG38; G-protein coupled receptor 49; G-protein coupled receptor 67; G-protein coupled receptor HG38; orphan G protein-coupled receptor HG38; leucine-rich repeat-containing G protein-coupled receptor 5; GPR49; GPR67; GRP49; MGC117008;

Gene ID 8549

mRNA Refseq NM_003667

Protein Refseq NP_003658

MIM 606667

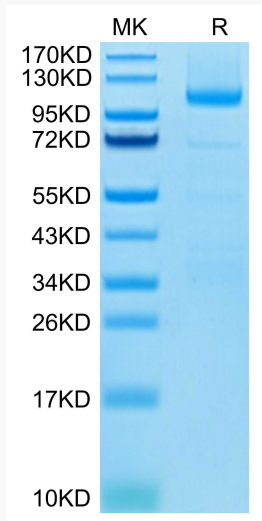
UniProt ID O75473

 Tel: 1-631-559-9269 1-516-512-3133

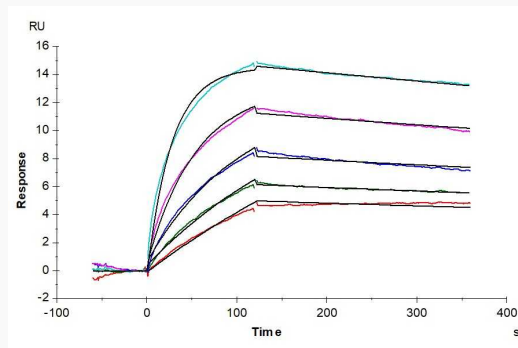
 Email: info@creative-biomart.com  Fax: 1-631-938-8127

 45-1 Ramsey Road, Shirley, NY 11967, USA

Tris-Bis PAGE



SPR



 Tel: 1-631-559-9269 1-516-512-3133

 Email: info@creative-biomart.com  Fax: 1-631-938-8127

 45-1 Ramsey Road, Shirley, NY 11967, USA