

Active Recombinant Human LGR5 Full Length Transmembrane protein(Nanodisc)

Cat. No. LGR5-1947H **Lot. No.** (See product label)

SPECIFICATION

Product Overview	Recombinant Human LGR5 Full Length Transmembrane protein(O75473), was expressed in HEK293.
Species	Human
Source	HEK293
Form	Lyophilized from nanodisc solubilization buffer (20 mM Tris-HCl, 150 mM NaCl, pH 8.0). Normally 5% – 8% trehalose is added as protectants before lyophilization. Please see Certificate of Analysis for specific instructions.
Bio-activity	Elisa plates were pre-coated with Flag Tag LGR5-Nanodisc (0.2µg/per well). Serial diluted anti-Flag monoclonal antibody solutions were added, washed, and incubated with secondary antibody before Elisa reading. From above data, the EC50 for anti-Flag monoclonal antibody binding with LGR5-Nanodisc is 5.199ng/ml.
Molecular Mass	The human full length LGR5 protein has a MW of 100.0 kDa.
Storage	Store at -20°C to -80°C for 12 months in lyophilized form. After reconstitution, if not intended for use within a month, aliquot and store at -80°C (Avoid repeated freezing and thawing). Lyophilized proteins are shipped at ambient temperature.
Reconstitution	It is recommended that sterile water be added to the vial to prepare a stock solution of 0.2 ug/ul. Centrifuge the vial at 4°C before opening to recover the entire contents.

 Tel: 1-631-559-9269 1-516-512-3133

 Email: info@creative-biomart.com  Fax: 1-631-938-8127

 45-1 Ramsey Road, Shirley, NY 11967, USA

Full Length

Full L.

GENE INFORMATION

Gene Name

LGR5 leucine-rich repeat containing G protein-coupled receptor 5 [Homo sapiens]

Official Symbol

LGR5

Synonyms

LGR5; leucine-rich repeat containing G protein-coupled receptor 5; G protein coupled receptor 49 , GPR49, GPR67, leucine rich repeat containing G protein coupled receptor 5; leucine-rich repeat-containing G-protein coupled receptor 5; FEX; HG38; G-protein coupled receptor 49; G-protein coupled receptor 67; G-protein coupled receptor HG38; orphan G protein-coupled receptor HG38; leucine-rich repeat-containing G protein-coupled receptor 5; GPR49; GPR67; GRP49; MGC117008;

Gene ID

8549

mRNA Refseq

NM_003667

Protein Refseq

NP_003658

MIM

606667

UniProt ID

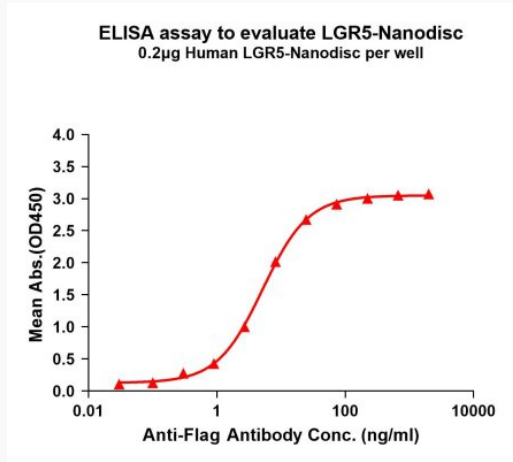
O75473

 Tel: 1-631-559-9269 1-516-512-3133

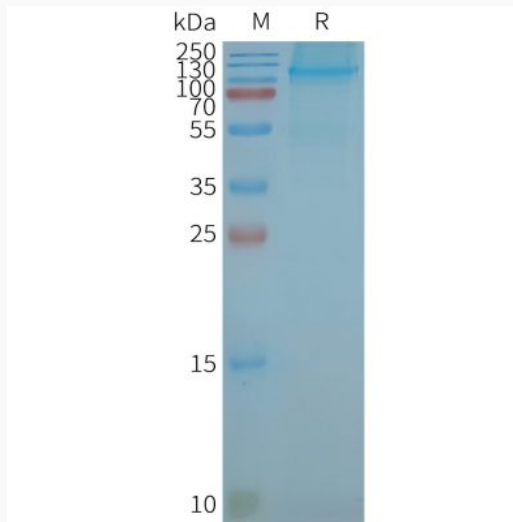
 Email: info@creative-biomart.com  Fax: 1-631-938-8127

 45-1 Ramsey Road, Shirley, NY 11967, USA

Activity



SDS-PAGE



 Tel: 1-631-559-9269 1-516-512-3133

 Email: info@creative-biomart.com  Fax: 1-631-938-8127

 45-1 Ramsey Road, Shirley, NY 11967, USA