

## Recombinant Human LGR5 Protein, His-tagged

Cat. No. LGR5-2392H Lot. No. (See product label)

### SPECIFICATION

<b>Product Overview</b>	Recombinant Human LGR5 Protein (Lys107-Val296) with a N-His tag was expressed in E. coli.
<b>Species</b>	Human
<b>Source</b>	E.coli
<b>ProteinLength</b>	Lys107-Val296
<b>Description</b>	The protein encoded by this gene is a leucine-rich repeat-containing receptor (LGR) and member of the G protein-coupled, 7-transmembrane receptor (GPCR) superfamily. The encoded protein is a receptor for R-spondins and is involved in the canonical Wnt signaling pathway. This protein plays a role in the formation and maintenance of adult intestinal stem cells during postembryonic development. Several transcript variants encoding different isoforms have been found for this gene.
<b>Form</b>	Freeze-dried powder
<b>Molecular Mass</b>	Predicted Molecular Mass: 25.2 kDa Accurate Molecular Mass: 25 kDa
<b>Endotoxin</b>	<1.0 EU per 1g (determined by the LAL method).
<b>Purity</b>	> 95%

 Tel: 1-631-559-9269 1-516-512-3133

 Email: [info@creative-biomart.com](mailto:info@creative-biomart.com)  Fax: 1-631-938-8127

 45-1 Ramsey Road, Shirley, NY 11967, USA

<b>Applications</b>	Positive Control; Immunogen; SDS-PAGE; WB.
<b>Stability</b>	The thermal stability is described by the loss rate. The loss rate was determined by accelerated thermal degradation test, that is, incubate the protein at 37 centigrade for 48h, and no obvious degradation and precipitation were observed. The loss rate is less than 5% within the expiration date under appropriate storage condition.
<b>Storage</b>	Avoid repeated freeze/thaw cycles. Store at 2-8 centigrade for one month. Aliquot and store at -80 centigrade for 12 months.
<b>Storage Buffer</b>	20mM Tris, 150mM NaCl, pH8.0, containing 1mM EDTA, 1mM DTT, 0.01% SKL, 5% Trehalose and Proclin300.
<b>Reconstitution</b>	Reconstitute in 20mM Tris, 150mM NaCl (pH8.0) to a concentration of 0.1-1.0 mg/mL. Do not vortex.

## GENE INFORMATION

<b>Gene Name</b>	LGR5 leucine-rich repeat containing G protein-coupled receptor 5 [ Homo sapiens (human) ]
<b>Official Symbol</b>	LGR5
<b>Synonyms</b>	LGR5; leucine-rich repeat containing G protein-coupled receptor 5; G protein coupled receptor 49, GPR49, GPR67, leucine rich repeat containing G protein coupled receptor 5; leucine-rich repeat-containing G-protein coupled receptor 5; FEX; HG38; G-protein coupled receptor 49; G-protein coupled receptor 67; G-protein coupled receptor HG38; orphan G protein-coupled receptor HG38; leucine-rich repeat-containing G protein-coupled receptor 5; GPR49; GPR67; GRP49; MGC117008;
<b>Gene ID</b>	8549

 Tel: 1-631-559-9269 1-516-512-3133

 Email: [info@creative-biomart.com](mailto:info@creative-biomart.com)  Fax: 1-631-938-8127

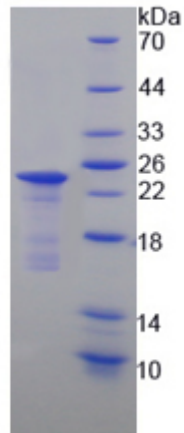
 45-1 Ramsey Road, Shirley, NY 11967, USA

mRNA Refseq [NM\\_003667](#)

Protein Refseq [NP\\_003658](#)

MIM [606667](#)

UniProt ID [O75473](#)



 Tel: 1-631-559-9269 1-516-512-3133

 Email: [info@creative-biomart.com](mailto:info@creative-biomart.com)  Fax: 1-631-938-8127

 45-1 Ramsey Road, Shirley, NY 11967, USA