

Recombinant Human LGR5 protein, His-tagged

Cat. No. LGR5-2914H Lot. No. (See product label)

SPECIFICATION

Product Overview	Recombinant Human LGR5 protein(373-536 aa), fused with N-terminal His tag, was expressed in E. coli.
Species	Human
Source	E.coli
ProteinLength	373-536 aa
Tag	N-His
Form	The purified protein was Lyophilized from sterile PBS (58mM Na ₂ HPO ₄ , 17mM NaH ₂ PO ₄ , 68mM NaCl, pH7.4). 5 % trehalose and 5 % mannitol are added as protectant before lyophilization.
Purity	95%, by SDS-PAGE with Coomassie Brilliant Blue staining.
Storage	Short-term storage: Store at 2-8°C for (1-2 weeks). Long-term storage: Aliquot and store at -20°C to -80°C for up to 3 months, reconstitution with sterile water and addition of an equal volume of glycerol. Avoid repeat freeze-thaw cycles.
Reconstitution	Reconstitute at 0.25 µg/µl in 200 µl sterile water for short-term storage. After reconstitution with sterile water, if glycerol has no effect on subsequent experiments, it is recommended to add an equal volume of glycerol for long-term storage.

 Tel: 1-631-559-9269 1-516-512-3133

 Email: info@creative-biomart.com  Fax: 1-631-938-8127

 45-1 Ramsey Road, Shirley, NY 11967, USA

AA Sequence CQKLQKIDLRHNEIYEIKVDTFQQLSLRSLNLAWNKIAIHPNAFSTLPSLIKLDLSSNL
LSSFPI TGLHGLTHLKL TGNHALQSLISSENFPELKVIE MPYAYQCCAFGVCENAYKIS
NQWNKGDNSSMDDLHKKDAGMFQAQDERDLEDFLDFEEDLKAL

GENE INFORMATION

Gene Name LGR5 leucine-rich repeat containing G protein-coupled receptor 5 [Homo sapiens]

Official Symbol LGR5

Synonyms LGR5; leucine-rich repeat containing G protein-coupled receptor 5; G protein coupled receptor 49 , GPR49, GPR67, leucine rich repeat containing G protein coupled receptor 5; leucine-rich repeat-containing G-protein coupled receptor 5; FEX; HG38; G-protein coupled receptor 49; G-protein coupled receptor 67; G-protein coupled receptor HG38; orphan G protein-coupled receptor HG38; leucine-rich repeat-containing G protein-coupled receptor 5; GPR49; GPR67; GRP49; MGC117008;

Gene ID 8549

mRNA Refseq NM_003667

Protein Refseq NP_003658

MIM 606667

UniProt ID O75473

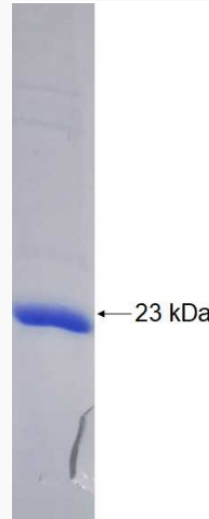
 Tel: 1-631-559-9269 1-516-512-3133

 Email: info@creative-biomart.com  Fax: 1-631-938-8127

 45-1 Ramsey Road, Shirley, NY 11967, USA



SDS-PAGE



Tel: 1-631-559-9269 1-516-512-3133

Email: info@creative-biomart.com Fax: 1-631-938-8127

45-1 Ramsey Road, Shirley, NY 11967, USA