

# Recombinant Human LGSN Protein, Myc/DDK-tagged, C13 and N15-labeled

Cat. No. LGSN-1526H Lot. No. (See product label)

## SPECIFICATION

<b>Product Overview</b>	LGSN MS Standard C13 and N15-labeled recombinant protein (NP_057655) with a C-terminal MYC/DDK tag, was expressed in HEK293 cells.
<b>Species</b>	Human
<b>Source</b>	HEK293
<b>Description</b>	This gene encodes a protein with similarity to the GS I members of the glutamine synthetase superfamily. The encoded protein is referred to as a pseudo-glutamine synthetase because it has no glutamine synthesis activity and may function as a chaperone protein. This protein is localized to the lens and may be associated with cataract disease. Alternative splicing results in multiple transcript variants.
<b>Molecular Mass</b>	57.3 kDa
<b>AA Sequence</b>	<p>MNNEEDLLQEDSTRDEGNETEANSMTLRTRKRVTKPYVCSTEVGETDMSNSND            CMRDSSQILTPPQLSSRMKHIRQAMAKNRLQFVRFEATDLHGVSRSKTIPAHFFQEK            VSHGVCMPRGYLEVIPNPKDNEMNNIRATCFNSDIVLMPPELSTFRVLPWADRTRVI            CDTFTVTGEPLLTSPRYIAKRQLSHLQASGFSLLSAFIYDFCIFGVPEILNSKIISFPALT            FLNNHDQPFMQELVDGLYHTGANVESFSSSTRPGQMEISFLPEFGISSADNAFTLRT            GVKEVARKYNYIASFFIETGFCDGILSHSLWDVDRKKNMFCSTSGTEQLTITGKKW            LAGLLKHSAAALSCLMAPSVSCRKRYSKDRKDLKKSVPPTTWGYNDNSCIFNIKCHGEK            GTRIENKLG SATANPYLVLAATVAAGLDGLHSSNEVLAGPDESTDFYQVEPSEIPLKL</p>

 Tel: 1-631-559-9269 1-516-512-3133

 Email: [info@creative-biomart.com](mailto:info@creative-biomart.com)  Fax: 1-631-938-8127

 45-1 Ramsey Road, Shirley, NY 11967, USA

EDALVALEEDQCLRQALGETFIRYFVAMKKYELENEEIAAERNKFLEYFITRTRPLEQ  
KLISEEDLAANDILDYKDDDDKV

**Purity** > 80% as determined by SDS-PAGE and Coomassie blue staining

**Stability** Stable for 3 months from receipt of products under proper storage and handling conditions.

**Storage** Store at -80 centigrade. Avoid repeated freeze-thaw cycles.

**Concentration** 50 µg/mL as determined by BCA

**Storage Buffer** 100 mM glycine, 25 mM Tris-HCl, pH 7.3.

## GENE INFORMATION

**Gene Name** LGSN lensin, lens protein with glutamine synthetase domain [ Homo sapiens (human) ]

**Official Symbol** LGSN

**Synonyms** LGSN; lensin, lens protein with glutamine synthetase domain; LGS; GLULD1; lensin; glutamate-ammonia ligase (glutamine synthase) domain containing 1; glutamate-ammonia ligase domain-containing protein 1

**Gene ID** 51557

**mRNA Refseq** NM\_016571

**Protein Refseq** NP\_057655

 Tel: 1-631-559-9269 1-516-512-3133

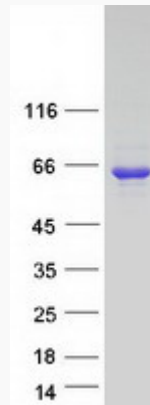
 Email: [info@creative-biomart.com](mailto:info@creative-biomart.com)  Fax: 1-631-938-8127

 45-1 Ramsey Road, Shirley, NY 11967, USA

**MIM** 611470

**UniProt ID** Q5TDP6

**SDS-PAGE**



 Tel: 1-631-559-9269 1-516-512-3133

 Email: [info@creative-biomart.com](mailto:info@creative-biomart.com)  Fax: 1-631-938-8127

 45-1 Ramsey Road, Shirley, NY 11967, USA