

Recombinant Human LHB Protein, Myc/DDK-tagged, C13 and N15-labeled

Cat. No. LHB-2831H **Lot. No.** (See product label)

SPECIFICATION

Product Overview

LHB MS Standard C13 and N15-labeled recombinant protein (NP_000885) with a C-terminal MYC/DDK tag, was expressed in HEK293 cells.

Species

Human

Source

HEK293

Description

This gene is a member of the glycoprotein hormone beta chain family and encodes the beta subunit of luteinizing hormone (LH). Glycoprotein hormones are heterodimers consisting of a common alpha subunit and an unique beta subunit which confers biological specificity. LH is expressed in the pituitary gland and promotes spermatogenesis and ovulation by stimulating the testes and ovaries to synthesize steroids. The genes for the beta chains of chorionic gonadotropin and for luteinizing hormone are contiguous on chromosome 19q13.3. Mutations in this gene are associated with hypogonadism which is characterized by infertility and pseudohermaphroditism.

Molecular Mass

15.35 kDa

AA Sequence

MEMLQGLLLLLLLSMGGAWASREPLRPWCHPINAILAVEKEGCPVCITVNTTICAGY
CPTMMRVLQAVLPPLPQVVCTYRDVRFESIRLPGCPRGVDPVVSFPVALSCRCGPC
RRSTSDCGGPKDHPLTCDHPQLSGLLFLTRTRPLEQKLISEEDLAANDILDYKDDDD
KV

 Tel: 1-631-559-9269 1-516-512-3133

 Email: info@creative-biomart.com  Fax: 1-631-938-8127

 45-1 Ramsey Road, Shirley, NY 11967, USA

Purity	> 80% as determined by SDS-PAGE and Coomassie blue staining
Stability	Stable for 3 months from receipt of products under proper storage and handling conditions.
Storage	Store at -80 centigrade. Avoid repeated freeze-thaw cycles.
Concentration	50 µg/mL as determined by BCA
Storage Buffer	100 mM glycine, 25 mM Tris-HCl, pH 7.3.

GENE INFORMATION

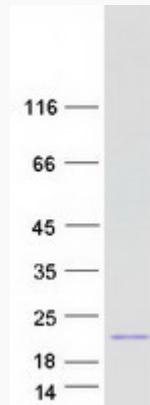
Gene Name	LHB luteinizing hormone beta polypeptide [Homo sapiens (human)]
Official Symbol	LHB
Synonyms	LHB; luteinizing hormone beta polypeptide; lutropin subunit beta; CGB4; hLHB; interstitial cell stimulating hormone; beta chain; LSH B; luteinizing hormone beta subunit; lutropin; LSH-beta; lutropin beta chain; interstitial cell stimulating hormone, beta chain; LSH-B;
Gene ID	3972
mRNA Refseq	NM_000894
Protein Refseq	NP_000885
MIM	152780
UniProt ID	P01229

 Tel: 1-631-559-9269 1-516-512-3133

 Email: info@creative-biomart.com  Fax: 1-631-938-8127

 45-1 Ramsey Road, Shirley, NY 11967, USA

SDS-PAGE



 Tel: 1-631-559-9269 1-516-512-3133

 Email: info@creative-biomart.com  Fax: 1-631-938-8127

 45-1 Ramsey Road, Shirley, NY 11967, USA