

Recombinant Bovine LHB Protein (21-141 aa), His-tagged

Cat. No. LHB-622B Lot. No. (See product label)

SPECIFICATION

Product Overview	Recombinant Bovine LHB Protein (21-141 aa) is produced by E. coli expression system. This protein is fused with a 6xHis tag at the N-terminal. Protein Description: Full Length of Mature Protein.
Species	Bovine
Source	E.coli
ProteinLength	21-141 aa
Description	Promotes spermatogenesis and ovulation by stimulating the testes and ovaries to synthesize steroids.
Form	Tris-based buffer, 50% glycerol
Molecular Mass	17.0 kDa
AA Sequence	SRGPLRPLCQPINATLAAEKEACPVCITFTTSICAGYCPSMKRVLPVILPPMPQRVCT YHELRFASVRLPGCPPGVDPMVSPVALSCHCGPCRLSSTDCGGPRTQPLACDHP PLPDILFL
Purity	> 90% as determined by SDS-PAGE.
Notes	Repeated freezing and thawing is not recommended. Store working aliquots at 4 centigrade for up to one week.

 Tel: 1-631-559-9269 1-516-512-3133

 Email: info@creative-biomart.com  Fax: 1-631-938-8127

 45-1 Ramsey Road, Shirley, NY 11967, USA

Storage

The shelf life is related to many factors, storage state, buffer ingredients, storage temperature and the stability of the protein itself. Generally, the shelf life of liquid form is 6 months at -20 centigrade/-80 centigrade. The shelf life of lyophilized form is 12 months at -20 centigrade/-80 centigrade.

Concentration

A hardcopy of COA with concentration instruction is sent along with the products.

GENE INFORMATION

Gene Name LHB luteinizing hormone beta polypeptide [Bos taurus (cattle)]

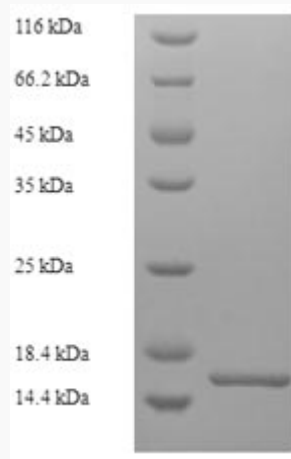
Official Symbol LHB

Gene ID 280839

mRNA Refseq NM_173930

Protein Refseq NP_776355

UniProt ID P04651



 Tel: 1-631-559-9269 1-516-512-3133

 Email: info@creative-biomart.com  Fax: 1-631-938-8127

 45-1 Ramsey Road, Shirley, NY 11967, USA



(Tris-Glycine gel) Discontinuous SDS-PAGE (reduced) with 5% enrichment gel and 15% separation gel.

 Tel: 1-631-559-9269 1-516-512-3133

 Email: info@creative-biomart.com  Fax: 1-631-938-8127

 45-1 Ramsey Road, Shirley, NY 11967, USA