

Recombinant Rat LHCGR Protein (27-362 aa), His-tagged

Cat. No. LHCGR-1443R Lot. No. (See product label)

SPECIFICATION

Product Overview	Recombinant Rat LHCGR Protein (27-362 aa) is produced by Yeast expression system. This protein is fused with a 6xHis tag at the N-terminal. Protein Description: Partial.
Species	Rat
Source	Yeast
ProteinLength	27-362 aa
Description	Receptor for lutropin-choriogonadotropic hormone. The activity of this receptor is mediated by G proteins which activate adenylate cyclase.
Form	Tris-based buffer,50% glycerol
Molecular Mass	39.2 kDa
AA Sequence	RELSGSRCPEPCDCAPDGALRCPGPRAGLARLSLTYLPVKVIPSQAFRGLNEVVKIEI SQSDSLERIEANAFDNLNLSSELLIQNTKNLLYIEPGAFTNLPRLYLSICNTGIRTLPD VTKISSSEFNFILEICDNLHITTIPGNAFQGMNNE SVTLKLYNGGFEEVQSHAFNGTTL ISLELKENIYLEKMHSGAFQGATGPSILDISSTKLQALPSHGLESIQTLIALSSYSKTL PSKEKFTSLLVATLTYP SHCCAFRNLPKKEQNF SFSIFENFSKQCESTVRKADNETLY SAIFEENELSGWDYDYGF CSPKTLQCAPEPDAFNPCEDIMG
Purity	> 90% as determined by SDS-PAGE.

 Tel: 1-631-559-9269 1-516-512-3133

 Email: info@creative-biomart.com  Fax: 1-631-938-8127

 45-1 Ramsey Road, Shirley, NY 11967, USA

Notes	Repeated freezing and thawing is not recommended. Store working aliquots at 4 centigrade for up to one week.
Storage	The shelf life is related to many factors, storage state, buffer ingredients, storage temperature and the stability of the protein itself. Generally, the shelf life of liquid form is 6 months at -20 centigrade/-80 centigrade. The shelf life of lyophilized form is 12 months at -20 centigrade/-80 centigrade.
Concentration	A hardcopy of COA with reconstitution instruction is sent along with the products.

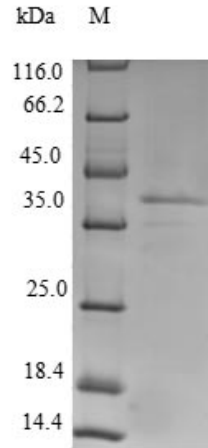
GENE INFORMATION

Gene Name	Lhcgr luteinizing hormone/choriogonadotropin receptor [Rattus norvegicus (Norway rat)]
Official Symbol	LHCGR
Synonyms	Lhr; LSHR; LSH-R; LH/CG-R;
Gene ID	25477
mRNA Refseq	NM_012978
Protein Refseq	NP_037110
UniProt ID	P16235

 Tel: 1-631-559-9269 1-516-512-3133

 Email: info@creative-biomart.com  Fax: 1-631-938-8127

 45-1 Ramsey Road, Shirley, NY 11967, USA



(Tris-Glycine gel) Discontinuous SDS-PAGE (reduced) with 5% enrichment gel and 15% separation gel.

 Tel: 1-631-559-9269 1-516-512-3133

 Email: info@creative-biomart.com  Fax: 1-631-938-8127

 45-1 Ramsey Road, Shirley, NY 11967, USA