

# Recombinant Human LHCGR Protein (27-363 aa), His-tagged

Cat. No. LHCGR-623H Lot. No. (See product label)

## SPECIFICATION

<b>Product Overview</b>	Recombinant Human LHCGR Protein (27-363 aa) is produced by E. coli expression system. This protein is fused with a 6xHis tag at the N-terminal. Research Area: Neuroscience. Protein Description: Partial.
<b>Species</b>	Human
<b>Source</b>	E.coli
<b>ProteinLength</b>	27-363 aa
<b>Description</b>	Receptor for lutropin-choriogonadotropic hormone. The activity of this receptor is mediated by G proteins which activate adenylate cyclase.
<b>Form</b>	Tris-based buffer, 50% glycerol
<b>Molecular Mass</b>	41.6 kDa
<b>AA Sequence</b>	EALCPEPCNCVDPD GALRCPGPTAGLTRLSLAYLPVKVIPSQAFRGLNEVIKIEISQIDS LERIEANAFDNLNLSEILIQNTKNLRYIEPGAFINLPRKLYLSICNTGIRKFPDVTKVFS SESNFILEICDNLHITTIPGNAFQGMNNE SVTLKLYGNGFEEVQSHAFNGTTLTSLELK ENVHLEKMHNGAFRGATGPKTLDISSTKLQALPSYGLESIQRLIATSSYSLKKLPSRE TFVNLLLEATLTYP SHCCAFRNLP TKEQNF SHSISENFSKQCESTVRKVNKNTLYSSM LAESEL SGWDY EYGFCLPKTPRCAPEPDAFNPCEDIMGYDFLR
<b>Purity</b>	> 90% as determined by SDS-PAGE.

 Tel: 1-631-559-9269 1-516-512-3133

 Email: [info@creative-biomart.com](mailto:info@creative-biomart.com)  Fax: 1-631-938-8127

 45-1 Ramsey Road, Shirley, NY 11967, USA

<b>Notes</b>	Repeated freezing and thawing is not recommended. Store working aliquots at 4 centigrade for up to one week.
<b>Storage</b>	The shelf life is related to many factors, storage state, buffer ingredients, storage temperature and the stability of the protein itself. Generally, the shelf life of liquid form is 6 months at -20 centigrade/-80 centigrade. The shelf life of lyophilized form is 12 months at -20 centigrade/-80 centigrade.
<b>Concentration</b>	A hardcopy of COA with concentration instruction is sent along with the products.

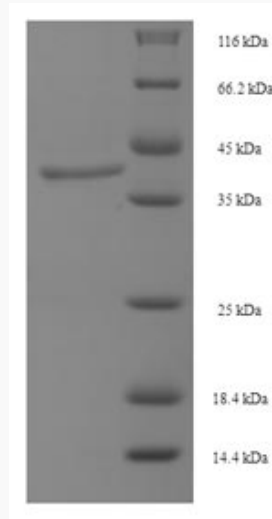
## GENE INFORMATION

<b>Gene Name</b>	LHCGR luteinizing hormone/choriogonadotropin receptor [ Homo sapiens ]
<b>Official Symbol</b>	LHCGR
<b>Synonyms</b>	LHCGR; LCGR; LGR2; LHR; ULG5; HHG; LHRHR; LSH-R; LH/CGR; LH/CG-R; FLJ41504;
<b>Gene ID</b>	3973
<b>mRNA Refseq</b>	NM_000233
<b>Protein Refseq</b>	NP_000224
<b>MIM</b>	152790
<b>UniProt ID</b>	P22888

 Tel: 1-631-559-9269 1-516-512-3133

 Email: [info@creative-biomart.com](mailto:info@creative-biomart.com)  Fax: 1-631-938-8127

 45-1 Ramsey Road, Shirley, NY 11967, USA



(Tris-Glycine gel) Discontinuous SDS-PAGE (reduced) with 5% enrichment gel and 15% separation gel.

 Tel: 1-631-559-9269 1-516-512-3133

 Email: [info@creative-biomart.com](mailto:info@creative-biomart.com)  Fax: 1-631-938-8127

 45-1 Ramsey Road, Shirley, NY 11967, USA