

# Recombinant Rat LHCGR Protein (27-362 aa), His-SUMO-tagged

Cat. No. LHCGR-624R    Lot. No. (See product label)

## SPECIFICATION

**Product Overview**      Recombinant Rat LHCGR Protein (27-362 aa) is produced by E. coli expression system. This protein is fused with a 6xHis-SUMO tag at the N-terminal. Protein Description: Partial.

**Species**      Rat

**Source**      E.coli

**ProteinLength**      27-362 aa

**Description**      Receptor for lutropin-choriogonadotropic hormone. The activity of this receptor is mediated by G proteins which activate adenylate cyclase.

**Form**      Tris-based buffer, 50% glycerol

**Molecular Mass**      53.2 kDa

**AA Sequence**

```

RELSGSRCP EPCDCAPDGALRCPGPRAGLARLSLTYLPVKVIPSQAFRGLNEVVKIEI
SQSDSLERIEANAFDNLNLSSELLIQNTKNLLYIEPGAFTNLPRLKYLSICNTGIRTLPD
VTKISSSEFNFILEICDNLHITTIPGNAFQGMNNE SVTLKLYGNGFEEVQSHAFNGTTL
ISLELKENIYLEKMHSGAFQGATGPSILDISSTKLQALPSHGLESIQTLIALSSYSKTL
PSKEKFTSLLVATLTYP SHCCAFRNLPKKEQNF SFSIFENFSKQCESTVRKADNETLY
SAIFEENELSGWDYDYGF CSPKTLQCAPEPDAFNPCEDIMG
    
```

 Tel: 1-631-559-9269    1-516-512-3133

 Email: [info@creative-biomart.com](mailto:info@creative-biomart.com)     Fax: 1-631-938-8127

 45-1 Ramsey Road, Shirley, NY 11967, USA

<b>Purity</b>	> 90% as determined by SDS-PAGE.
<b>Notes</b>	Repeated freezing and thawing is not recommended. Store working aliquots at 4 centigrade for up to one week.
<b>Storage</b>	The shelf life is related to many factors, storage state, buffer ingredients, storage temperature and the stability of the protein itself. Generally, the shelf life of liquid form is 6 months at -20 centigrade/-80 centigrade. The shelf life of lyophilized form is 12 months at -20 centigrade/-80 centigrade.
<b>Concentration</b>	A hardcopy of COA with concentration instruction is sent along with the products.

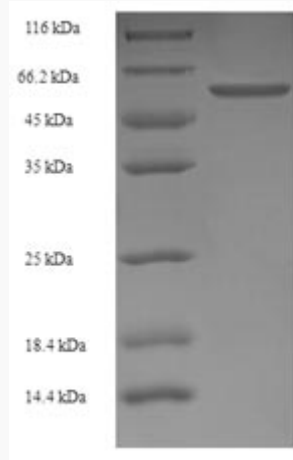
## GENE INFORMATION

<b>Gene Name</b>	Lhcgr luteinizing hormone/choriogonadotropin receptor [ <i>Rattus norvegicus</i> (Norway rat) ]
<b>Official Symbol</b>	LHCGR
<b>Synonyms</b>	Lhr; LSHR; LSH-R; LH/CG-R;
<b>Gene ID</b>	25477
<b>mRNA Refseq</b>	NM_012978
<b>Protein Refseq</b>	NP_037110
<b>UniProt ID</b>	P16235

 Tel: 1-631-559-9269 1-516-512-3133

 Email: [info@creative-biomart.com](mailto:info@creative-biomart.com)  Fax: 1-631-938-8127

 45-1 Ramsey Road, Shirley, NY 11967, USA



(Tris-Glycine gel) Discontinuous SDS-PAGE (reduced) with 5% enrichment gel and 15% separation gel.

 Tel: 1-631-559-9269 1-516-512-3133

 Email: [info@creative-biomart.com](mailto:info@creative-biomart.com)  Fax: 1-631-938-8127

 45-1 Ramsey Road, Shirley, NY 11967, USA