

Recombinant Human LHFPL2 Protein, Myc/DDK-tagged, C13 and N15-labeled

Cat. No. LHFPL2-2574H **Lot. No.** (See product label)

SPECIFICATION

Product Overview	LHFPL2 MS Standard C13 and N15-labeled recombinant protein (NP_005770) with a C-terminal MYC/DDK tag, was expressed in HEK293 cells.
Species	Human
Source	HEK293
Description	This gene is a member of the lipoma HMGIC fusion partner (LHFP) gene family, which is a subset of the superfamily of tetraspan transmembrane protein encoding genes. Mutations in one LHFP-like gene result in deafness in humans and mice, and a second LHFP-like gene is fused to a high-mobility group gene in a translocation-associated lipoma. Alternatively spliced transcript variants have been found, but their biological validity has not been determined.
Molecular Mass	24.3 kDa
AA Sequence	MCHVIVTCRSM LW TLLSIVVAF AELIAFMSADW LIGKARSRGGVEPAGPGGGGSPEPY HPTLGIYARCIRNPGVQHFQRDTLCGPYAESFGEIASGFWQATAIFLAVGIFILCMVAL VSVFTMCVQSIMKKSIFNVCGLLQGIAGLFLILGLILYPAGWGCQKAIDYCGHYASAY KPGDCSLGWAFYTAIGGTVLTFCIAVFSAQAEIATSSDKVQEEIEEGKNLICLLTRTRP LEQKLISEEDLAANDILDYKDDDDKV
Purity	> 80% as determined by SDS-PAGE and Coomassie blue staining

 Tel: 1-631-559-9269 1-516-512-3133

 Email: info@creative-biomart.com  Fax: 1-631-938-8127

 45-1 Ramsey Road, Shirley, NY 11967, USA

Stability	Stable for 3 months from receipt of products under proper storage and handling conditions.
Storage	Store at -80 centigrade. Avoid repeated freeze-thaw cycles.
Concentration	50 µg/mL as determined by BCA
Storage Buffer	100 mM glycine, 25 mM Tris-HCl, pH 7.3.
GENE INFORMATION	
Gene Name	LHFPL2 lipoma HMGIC fusion partner-like 2 [Homo sapiens (human)]
Official Symbol	LHFPL2
Synonyms	LHFPL2; lipoma HMGIC fusion partner-like 2; lipoma HMGIC fusion partner-like 2 protein; KIAA0206; LHFP-like protein 2; DKFZp781E0375;
Gene ID	10184
mRNA Refseq	NM_005779
Protein Refseq	NP_005770
MIM	609718
UniProt ID	Q6ZUX7

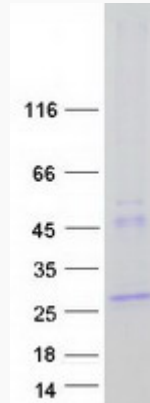
 Tel: 1-631-559-9269 1-516-512-3133

 Email: info@creative-biomart.com  Fax: 1-631-938-8127

 45-1 Ramsey Road, Shirley, NY 11967, USA



SDS-PAGE



Tel: 1-631-559-9269 1-516-512-3133

Email: info@creative-biomart.com Fax: 1-631-938-8127

45-1 Ramsey Road, Shirley, NY 11967, USA