

Recombinant Human LHPP Protein (1-270 aa), His-tagged

Cat. No. LHPP-1745H Lot. No. (See product label)

SPECIFICATION

Product Overview	Recombinant Human LHPP Protein (1-270 aa) is produced by Yeast expression system. This protein is fused with a 6xHis tag at the N-terminal. Research Area: Metabolism. Protein Description: Full Length.
Species	Human
Source	Yeast
ProteinLength	1-270 aa
Description	Phosphatase that hydrolyzes imidodiphosphate, 3-phosphohistidine and 6-phospholysine. Has broad substrate specificity and can also hydrolyze inorganic diphosphate, but with lower efficiency (By similarity)
Form	Tris-based buffer,50% glycerol
Molecular Mass	31.2 kDa
AA Sequence	MAPW GKRLAGVRGVLLDISGVLYDSGAGGGTAIAGSVEAVARLKRSRLKVRFCNE SQKSRAELVGQLQRLGFDISEQEVTAPAPAACQILKEQGLRPYLLIHDGVRSEFDQID TSNPNCVVIADAGESFSYQNMNNAFQVLMELEKPVLLISLGKGRYYKETSGLMLDVG PYMKALEYACGIKAEVVGKPSPEFFKSALQAIGVEAHQAVMIGDDIVGDVGGQAQRC GMRALQVRTGKFRPSDEHHPEVKADGYVDNLAEAVDLLLQHADK
Purity	> 90% as determined by SDS-PAGE.

 Tel: 1-631-559-9269 1-516-512-3133

 Email: info@creative-biomart.com  Fax: 1-631-938-8127

 45-1 Ramsey Road, Shirley, NY 11967, USA

Notes	Repeated freezing and thawing is not recommended. Store working aliquots at 4 centigrade for up to one week.
Storage	The shelf life is related to many factors, storage state, buffer ingredients, storage temperature and the stability of the protein itself. Generally, the shelf life of liquid form is 6 months at -20 centigrade/-80 centigrade. The shelf life of lyophilized form is 12 months at -20 centigrade/-80 centigrade.
Concentration	A hardcopy of COA with reconstitution instruction is sent along with the products.

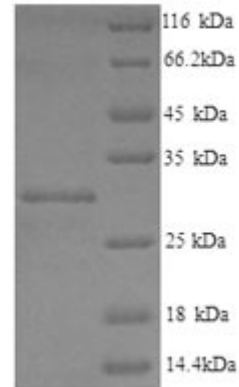
GENE INFORMATION

Gene Name	LHPP phospholysine phosphohistidine inorganic pyrophosphate phosphatase [Homo sapiens]
Official Symbol	LHPP
Synonyms	LHPP; HDHD2B; hLHPP; FLJ44846; FLJ46044; MGC117251; MGC142189; MGC142191;
Gene ID	64077
mRNA Refseq	NM_001167880
Protein Refseq	NP_001161352
UniProt ID	Q9H008

 Tel: 1-631-559-9269 1-516-512-3133

 Email: info@creative-biomart.com  Fax: 1-631-938-8127

 45-1 Ramsey Road, Shirley, NY 11967, USA



(Tris-Glycine gel) Discontinuous SDS-PAGE (reduced) with 5% enrichment gel and 15% separation gel.

☎ Tel: 1-631-559-9269 1-516-512-3133

☎ Email: info@creative-biomart.com ☎ Fax: 1-631-938-8127

☎ 45-1 Ramsey Road, Shirley, NY 11967, USA