

## Recombinant Human LIF Protein, His-tagged

Cat. No. LIF-02H Lot. No. (See product label)

### SPECIFICATION

<b>Product Overview</b>	Recombinant Human LIF Protein, fused to His-tag was expressed in HEK293T cells.
<b>Species</b>	Human
<b>Source</b>	HEK293
<b>Description</b>	The protein encoded by this gene is a pleiotropic cytokine with roles in several different systems. It is involved in the induction of hematopoietic differentiation in normal and myeloid leukemia cells, induction of neuronal cell differentiation, regulator of mesenchymal to epithelial conversion during kidney development, and may also have a role in immune tolerance at the maternal-fetal interface. Alternatively spliced transcript variants encoding multiple isoforms have been observed for this gene.
<b>Form</b>	Liquid
<b>AA Sequence</b>	SPLPITPVNATCAIRHPCHNNLMNQIRSQLAQLNGSANALFILYYTAQGEPPFNLDK LCGPNVTDFFPFHANGTEKAKLVELYRIVVYLGTS LGNITRDQKILNPSALSLHSKLN ATADILRGLLSNVLCRLCSKYHVGHV DVTYGPDTSGKDV FQKKKLG CQLLGKYKQII AVLAQAFGGGGSHHHHHH*
<b>Purity</b>	>90% determined by SDS-PAGE (Reduced).
<b>Storage</b>	Store at -20 centigrade to -80 centigrade.
<b>Storage Buffer</b>	PBS, pH 6.8

 Tel: 1-631-559-9269 1-516-512-3133

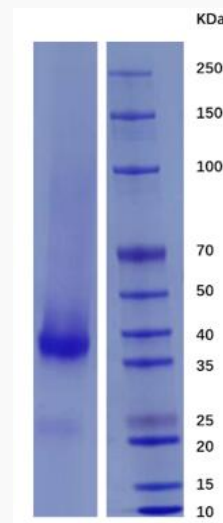
 Email: [info@creative-biomart.com](mailto:info@creative-biomart.com)  Fax: 1-631-938-8127

 45-1 Ramsey Road, Shirley, NY 11967, USA

## GENE INFORMATION

<b>Gene Name</b>	LIF LIF interleukin 6 family cytokine [ Homo sapiens (human) ]
<b>Official Symbol</b>	LIF
<b>Synonyms</b>	CDF; DIA; HILDA; MLPLI
<b>Gene ID</b>	3976
<b>mRNA Refseq</b>	NM_002309.5
<b>Protein Refseq</b>	NP_002300.1
<b>MIM</b>	159540
<b>UniProt ID</b>	P15018

### SDS-PAGE



 Tel: 1-631-559-9269 1-516-512-3133

 Email: [info@creative-biomart.com](mailto:info@creative-biomart.com)  Fax: 1-631-938-8127

 45-1 Ramsey Road, Shirley, NY 11967, USA