

Active Recombinant Human LIF Protein

Cat. No. LIF-101H Lot. No. (See product label)

SPECIFICATION

Product Overview	Recombinant Human Leukemia Inhibitory Factor is produced by our E.coli expression system and the target gene encoding Ser23-Phe202 is expressed.
Species	Human
Source	E.coli
ProteinLength	23-202 a.a.
Description	Leukemia Inhibitory Factor (LIF) is a lymphoid factor that promotes long-term maintenance of embryonic stem cells by suppressing spontaneous differentiation. LIF has a number of other activities including cholinergic neuron differentiation, control of stem cell pluripotency, bone and fat metabolism, mitogenesis of certain factor dependent cell lines and promotion of megakaryocyte production in vivo. Human and murine mature LIF exhibit a 78% sequence identity at the amino acid level. Human LIF is equally active on human and mouse cells. Murine LIF is approximately 1000 fold less active on human cells than human LIF.
Form	Lyophilized from a 0.2 um filtered solution of 20mM PB, 150mM NaCl, 0.02% Tween 20, pH 7.4.
Bio-activity	ED50 is less than 0.01 ng/ml. Specific Activity of 1.0×10^8 IU/mg. Measured by the M1 cell differentiation assay.
AA Sequence	Ser23-Phe202

 Tel: 1-631-559-9269 1-516-512-3133

 Email: info@creative-biomart.com  Fax: 1-631-938-8127

 45-1 Ramsey Road, Shirley, NY 11967, USA

Endotoxin	Less than 0.1 ng/ug (1 EU/ug).
Purity	>95%
Storage	<p>Lyophilized protein should be stored at < -20 centigrade, though stable at room temperature for 3 weeks.</p> <p>Reconstituted protein solution can be stored at 4-7 centigrade for 2-7 days.</p> <p>Aliquots of reconstituted samples are stable at < -20 centigrade for 3 months.</p>
Quality Statement	Purity: Greater than 95% as determined by reducing SDS-PAGE.
Shipping	<p>The product is shipped at ambient temperature.</p> <p>Upon receipt, store it immediately at the temperature listed below.</p>

GENE INFORMATION

Gene Name	LIF LIF interleukin 6 family cytokine [Homo sapiens (human)]
Official Symbol	LIF
Synonyms	Leukemia Inhibitory Factor; LIF; Differentiation-Stimulating Factor; D Factor; Melanoma-Derived LPL Inhibitor; MLPLI; Emfilermin; HILDA; CDF; DIA
Gene ID	3976
mRNA Refseq	NM_002309.5
Protein Refseq	NP_002300.1
MIM	159540

 Tel: 1-631-559-9269 1-516-512-3133

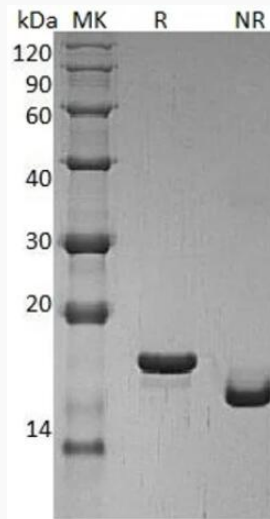
 Email: info@creative-biomart.com  Fax: 1-631-938-8127

 45-1 Ramsey Road, Shirley, NY 11967, USA

UniProt ID

P15018

SDS-PAGE



 Tel: 1-631-559-9269 1-516-512-3133

 Email: info@creative-biomart.com  Fax: 1-631-938-8127

 45-1 Ramsey Road, Shirley, NY 11967, USA