

# Recombinant Full Length Human LIF Protein, C-Flag-tagged

**Cat. No.** LIF-1814HFL    **Lot. No.** (See product label)

## SPECIFICATION

<b>Product Overview</b>	Recombinant Full Length Human LIF Protein, fused to Flag-tag at C-terminus, was expressed in Mammalian cells.
<b>Species</b>	Human
<b>Source</b>	Mammalian Cells
<b>Description</b>	The protein encoded by this gene is a pleiotropic cytokine with roles in several different systems. It is involved in the induction of hematopoietic differentiation in normal and myeloid leukemia cells, induction of neuronal cell differentiation, regulator of mesenchymal to epithelial conversion during kidney development, and may also have a role in immune tolerance at the maternal-fetal interface. Alternatively spliced transcript variants encoding multiple isoforms have been observed for this gene.
<b>Form</b>	25 mM Tris HCl, pH 7.3, 100 mM glycine, 10% glycerol.
<b>Molecular Mass</b>	19.7 kDa
<b>AA Sequence</b>	MKVLAAGVVPLLLVLHWKHGAGSPLPITPVNATCAIRHPCHNNLMNQIRSQLAQLNG SANALFILYYTAQ GEPFPNNLDKLCGPNVTDFFPPFHANGTEKAKLVELYRIVVYLGT SLGNITRDQKILNPSALSLSKLNAT ADILRGLLSNVLCRLCSKYHVGHVDTVYGPDTSGKDVFQKKKLG CQLLGKYKQIIAVL AQAFTRTRPLEQKLISEEDLAANDILDYKDDDDKV
<b>Purity</b>	> 80% as determined by SDS-PAGE and Coomassie blue staining.

 Tel: 1-631-559-9269    1-516-512-3133

 Email: [info@creative-biomart.com](mailto:info@creative-biomart.com)     Fax: 1-631-938-8127

 45-1 Ramsey Road, Shirley, NY 11967, USA

<b>Stability</b>	Stable for 12 months from the date of receipt of the product under proper storage and handling conditions. Avoid repeated freeze-thaw cycles.
<b>Storage</b>	Store at -80 centigrade.
<b>Concentration</b>	>50 ug/mL as determined by microplate BCA method.
<b>Preparation</b>	Recombinant protein was captured through anti-DDK affinity column followed by conventional chromatography steps.
<b>Protein Families</b>	Adult stem cells, Druggable Genome, ES Cell Differentiation/IPS, Secreted Protein
<b>Protein Pathways</b>	Cytokine-cytokine receptor interaction, Jak-STAT signaling pathway
<b>Full Length</b>	Full L.

## GENE INFORMATION

<b>Gene Name</b>	LIF LIF interleukin 6 family cytokine [ Homo sapiens (human) ]
<b>Official Symbol</b>	LIF
<b>Synonyms</b>	CDF; DIA; HILDA; MLPLI
<b>Gene ID</b>	3976
<b>mRNA Refseq</b>	NM_002309.5
<b>Protein Refseq</b>	NP_002300.1
<b>MIM</b>	159540

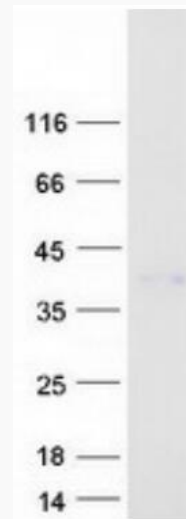
 Tel: 1-631-559-9269 1-516-512-3133

 Email: [info@creative-biomart.com](mailto:info@creative-biomart.com)  Fax: 1-631-938-8127

 45-1 Ramsey Road, Shirley, NY 11967, USA

UniProt ID

P15018



Coomassie blue staining of purified LIF protein.

 Tel: 1-631-559-9269 1-516-512-3133

 Email: [info@creative-biomart.com](mailto:info@creative-biomart.com)  Fax: 1-631-938-8127

 45-1 Ramsey Road, Shirley, NY 11967, USA