

Active Recombinant Human LIF protein, His-tagged

Cat. No. LIF-2623H Lot. No. (See product label)

SPECIFICATION

| | |
|-------------------------|---|
| Product Overview | Active Recombinant Human Leukemia inhibitory factor/LIF Protein is produced by HEK293 expression system. The target protein is expressed with sequence (Ser23-Phe202) of human LIF (Accession #NP_002300.1) fused with a 6xHis tag at the C-terminus. |
| Species | Human |
| Source | HEK293 |
| ProteinLength | Ser23-Phe202 |
| Form | Lyophilized from a 0.22 µm filtered solution of PBS, pH 7.4. |
| Bio-activity | Measured in a cell proliferation assay using TF-1 human erythroleukemic cells. The ED50 for this effect is typically 0.1-0.3 ng/mL. |
| Molecular Mass | 33-45kDa |
| Endotoxin | < 0.1 EU/µg of the protein by LAL method. |
| Purity | > 95% by SDS-PAGE. |
| Storage | Store the lyophilized protein at -20°C to -80 °C for long term. After reconstitution, the protein solution is stable at -20 °C for 3 months, at 2-8 °C for up to 1 week. |

 Tel: 1-631-559-9269 1-516-512-3133

 Email: info@creative-biomart.com  Fax: 1-631-938-8127

 45-1 Ramsey Road, Shirley, NY 11967, USA

Reconstitution Reconstitute to a concentration of 0.1-0.5 mg/mL in sterile distilled water.

GENE INFORMATION

Gene Name LIF leukemia inhibitory factor [Homo sapiens]

Official Symbol LIF

Synonyms LIF; leukemia inhibitory factor; CDF; cholinergic differentiation factor; DIA; differentiation inhibitory activity; differentiation inducing factor; hepatocyte stimulating factor III; HILDA; human interleukin in DA cells; D factor; melanoma-derived LPL inhibitor; differentiation-inducing factor; hepatocyte-stimulating factor III; differentiation-stimulating factor; MLPLI;

Gene ID 3976

mRNA Refseq NM_001257135

Protein Refseq NP_001244064

MIM 159540

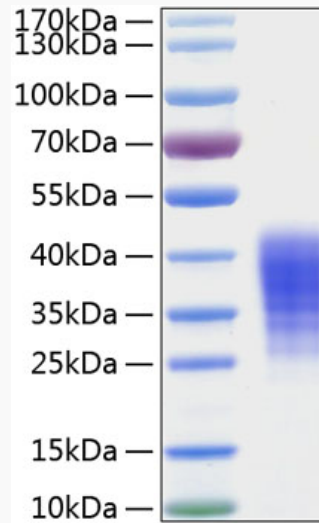
UniProt ID P15018

 Tel: 1-631-559-9269 1-516-512-3133

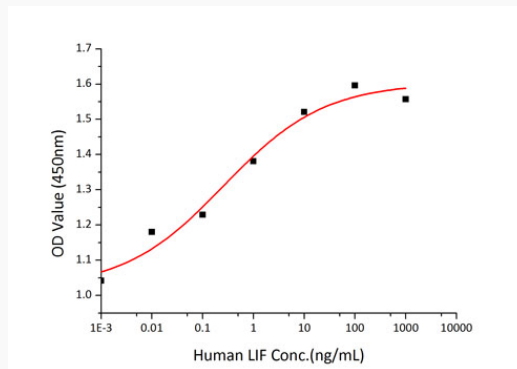
 Email: info@creative-biomart.com  Fax: 1-631-938-8127

 45-1 Ramsey Road, Shirley, NY 11967, USA

SDS-PAGE



Bio-activity



 Tel: 1-631-559-9269 1-516-512-3133

 Email: info@creative-biomart.com  Fax: 1-631-938-8127

 45-1 Ramsey Road, Shirley, NY 11967, USA