

Recombinant Human LIF Protein (Ready-to-Use)

Cat. No. LIF-35H Lot. No. (See product label)

SPECIFICATION

Product Overview Recombinant Human LIF Protein (Ready-to-Use) was expressed without tag.

Species Human

Description Enables cytokine activity and growth factor activity. Acts upstream of or within several processes, including animal organ development; generation of neurons; and positive regulation of macromolecule metabolic process. Located in extracellular space. Is expressed in several structures, including alimentary system; central nervous system; cranium; early conceptus; and female reproductive system. Orthologous to human LIF (LIF interleukin 6 family cytokine).

GENE INFORMATION

Gene Name LIF leukemia inhibitory factor [*Homo sapiens* (human)]

Official Symbol LIF

Synonyms LIF; leukemia inhibitory factor; CDF; cholinergic differentiation factor; DIA; differentiation inhibitory activity; differentiation inducing factor; hepatocyte stimulating factor III; HILDA; human interleukin in DA cells; D factor; melanoma-derived LPL inhibitor; differentiation-inducing factor; hepatocyte-stimulating factor III; differentiation-stimulating factor; MLPLI;

Gene ID 3976

 Tel: 1-631-559-9269 1-516-512-3133

 Email: info@creative-biomart.com  Fax: 1-631-938-8127

 45-1 Ramsey Road, Shirley, NY 11967, USA

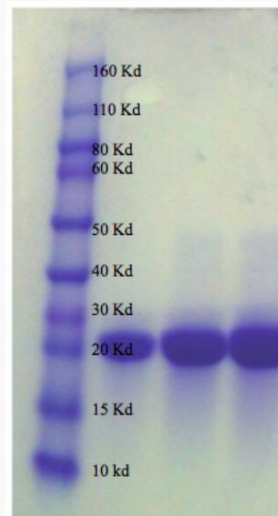
mRNA Refseq [NM_001257135](#)

Protein Refseq [NP_001244064](#)

MIM [159540](#)

UniProt ID [P15018](#)

SDS-PAGE



 Tel: 1-631-559-9269 1-516-512-3133

 Email: info@creative-biomart.com  Fax: 1-631-938-8127

 45-1 Ramsey Road, Shirley, NY 11967, USA