

## Recombinant Human LIF protein, Trx-His-SUMO-tagged

Cat. No. LIF-4656H Lot. No. (See product label)

### SPECIFICATION

<b>Product Overview</b>	Recombinant Human LIF protein(P15018)(426aa), fused with three tags, Trx, His and SUMO tag, was expressed in E. coli.
<b>Species</b>	Human
<b>Source</b>	E.coli
<b>Protein Length</b>	426aa(including fusion tag)
<b>Tag</b>	Trx-His-SUMO
<b>Form</b>	1XPBS.
<b>Molecular Mass</b>	46.9kDa(including fusion tag)
<b>Storage</b>	Store at -80°C and avoid repeated freeze-thaw cycles.
<b>Reconstitution</b>	It is recommended that sterile water be added to the vial to prepare a stock solution of 0.2 ug/ul. Centrifuge the vial at 4°C before opening to recover the entire contents.

### GENE INFORMATION

<b>Gene Name</b>	LIF leukemia inhibitory factor [ Homo sapiens ]
<b>Official Symbol</b>	LIF

 Tel: 1-631-559-9269 1-516-512-3133

 Email: [info@creative-biomart.com](mailto:info@creative-biomart.com)  Fax: 1-631-938-8127

 45-1 Ramsey Road, Shirley, NY 11967, USA

**Synonyms** LIF; leukemia inhibitory factor; CDF; cholinergic differentiation factor; DIA; differentiation inhibitory activity; differentiation inducing factor; hepatocyte stimulating factor III; HILDA; human interleukin in DA cells; D factor; melanoma-derived LPL inhibitor; differentiation-inducing factor; hepatocyte-stimulating factor III; differentiation-stimulating factor; MLPLI;

**Gene ID** [3976](#)

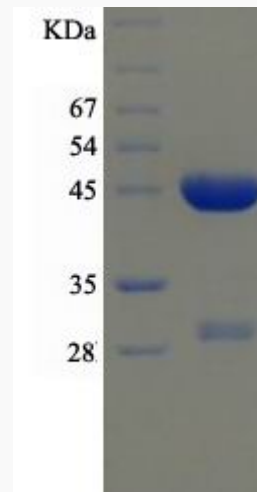
**mRNA Refseq** [NM\\_001257135](#)

**Protein Refseq** [NP\\_001244064](#)

**MIM** [159540](#)

**UniProt ID** [P15018](#)

**SDS-PAGE**



 Tel: 1-631-559-9269 1-516-512-3133

 Email: [info@creative-biomart.com](mailto:info@creative-biomart.com)  Fax: 1-631-938-8127

 45-1 Ramsey Road, Shirley, NY 11967, USA