

Recombinant Human LIF protein

Cat. No. LIF-6754H Lot. No. (See product label)

SPECIFICATION

Product Overview	Recombinant Human LIF protein(P15018-1)(Ser23-Phe202) was expressed in HEK293.
Species	Human
Source	HEK293
ProteinLength	Ser23-Phe202
Tag	Non
Form	Lyophilized from 0.22µm filtered solution in PBS (pH 7.4). Normally 5% trehalose is added as protectant before lyophilization.
Bio-activity	Immobilized Human LIF at 2µg/ml (100µl/Well) on the plate. Dose response curve for Human LIF R, hFc Tag with the EC50 of 0.17µg/ml determined by ELISA.
Molecular Mass	The protein has a predicted MW of 19.7 kDa. Due to glycosylation, the protein migrates to 40-55 kDa based on Tris-Bis PAGE result.
Endotoxin	Less than 1EU per µg by the LAL method.
Purity	> 95% as determined by Tris-Bis PAGE; > 95% as determined by HPLC
Storage	Reconstituted protein stable at -80°C for 12 months, 4°C for 1 week. Use a manual

 Tel: 1-631-559-9269 1-516-512-3133

 Email: info@creative-biomart.com  Fax: 1-631-938-8127

 45-1 Ramsey Road, Shirley, NY 11967, USA

defrost freezer and avoid repeated freeze-thaw cycles.

Reconstitution

Centrifuge tubes before opening. Reconstituting to a concentration more than 100 µg/ml is recommended. Dissolve the lyophilized protein in distilled water.

GENE INFORMATION**Gene Name**

LIF leukemia inhibitory factor [*Homo sapiens*]

Official Symbol

LIF

Synonyms

LIF; leukemia inhibitory factor; CDF; cholinergic differentiation factor; DIA; differentiation inhibitory activity; differentiation inducing factor; hepatocyte stimulating factor III; HILDA; human interleukin in DA cells; D factor; melanoma-derived LPL inhibitor; differentiation-inducing factor; hepatocyte-stimulating factor III; differentiation-stimulating factor; MLPLI;

Gene ID

3976

mRNA Refseq

NM_001257135

Protein Refseq

NP_001244064

MIM

159540

UniProt ID

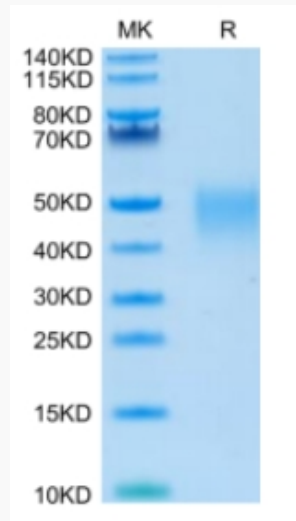
P15018

 Tel: 1-631-559-9269 1-516-512-3133

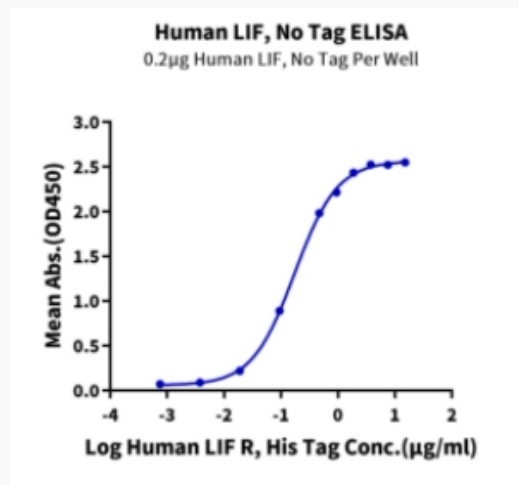
 Email: info@creative-biomart.com  Fax: 1-631-938-8127

 45-1 Ramsey Road, Shirley, NY 11967, USA

Tris-Bis PAGE



ELISA Data



Tel: 1-631-559-9269 1-516-512-3133

Email: info@creative-biomart.com Fax: 1-631-938-8127

45-1 Ramsey Road, Shirley, NY 11967, USA