

## Recombinant Human LIF protein, His-tagged

Cat. No. LIF-7733H Lot. No. (See product label)

### SPECIFICATION

|                         |   |
|-------------------------|---|
| <b>Product Overview</b> | Recombinant Human LIF protein(27-202 aa), fused with N-terminal His tag, was expressed in E. coli.  |
| <b>Species</b>          | Human   |
| <b>Source</b>           | E.coli  |
| <b>ProteinLength</b>    | 27-202 aa   |
| <b>Form</b>             | The purified protein was Lyophilized from sterile PBS (58mM Na <sub>2</sub> HPO <sub>4</sub> , 17mM NaH <sub>2</sub> PO <sub>4</sub> , 68mM NaCl, pH7.4). 5 % trehalose and 5 % mannitol are added as protectant before lyophilization. The elution buffer contain 300mM imidazole. |
| <b>Storage</b>          | Short-term storage: Store at 2-8°C for (1-2 weeks). Long-term storage: Aliquot and store at -20°C to -80°C for up to 3 months, reconstitution with sterile water and addition of an equal volume of glycerol. Avoid repeat freeze-thaw cycles.                                      |
| <b>Purity</b>           | 90%, by SDS-PAGE with Coomassie Brilliant Blue staining.  |

### GENE INFORMATION

|                        |   |
|------------------------|---|
| <b>Official Symbol</b> | LIF   |
| <b>Synonyms</b>        | LIF; leukemia inhibitory factor; CDF; cholinergic differentiation factor; DIA; differentiation inhibitory activity; differentiation inducing factor; hepatocyte stimulating |

 Tel: 1-631-559-9269 1-516-512-3133

 Email: [info@creative-biomart.com](mailto:info@creative-biomart.com)  Fax: 1-631-938-8127

 45-1 Ramsey Road, Shirley, NY 11967, USA

factor III; HILDA; human interleukin in DA cells; D factor; melanoma-derived LPL inhibitor; differentiation-inducing factor; hepatocyte-stimulating factor III; differentiation-stimulating factor; MLPLI;

**Gene ID** 3976

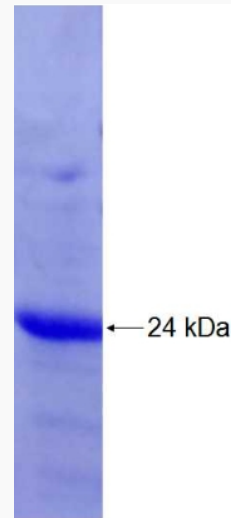
**mRNA Refseq** NM\_001257135

**Protein Refseq** NP\_001244064

**MIM** 159540

**UniProt ID** P15018

**SDS-PAGE**



 Tel: 1-631-559-9269 1-516-512-3133

 Email: [info@creative-biomart.com](mailto:info@creative-biomart.com)  Fax: 1-631-938-8127

 45-1 Ramsey Road, Shirley, NY 11967, USA