

## Recombinant Human LIFR protein, Fc-tagged

Cat. No. LIFR-612H Lot. No. (See product label)

### SPECIFICATION

<b>Product Overview</b>	Recombinant Human LIFR protein (Gln45-Ser833), fused to human IgG1 Fc tag at C-terminus, was expressed in human 293 cells (HEK293).
<b>Species</b>	Human
<b>Source</b>	HEK293
<b>ProteinLength</b>	789
<b>Description</b>	<p>Leukemia inhibitory factor receptor is also known as LIFR; CD118; FLJ98106; FLJ99923; LIF-R; SJS2; STWS; SWS, is the receptor for leukemia inhibitory factor (LIF). The leukemia inhibitory factor is a polyfunctional cytokine that affects the differentiation, survival, and proliferation of a wide variety of cells in the adult and the embryo. LIF action appears to be mediated through a high-affinity receptor complex composed of a low-affinity LIF binding chain (LIF receptor) and a high-affinity converter subunit, gp130. Both LIFR and gp130 are members of a family of cytokine receptors that includes components of the receptors for the majority of hematopoietic cytokines and for cytokines that affect other systems, including the ciliary neurotrophic factor, growth hormone and prolactin Defects in LIFR are the cause of Stueve-Wiedemann syndrome (SWS), a severe autosomal recessive condition and belongs to the group of the bent-bone dysplasias.</p>
<b>Form</b>	Lyophilized from 0.22 um filtered solution in Tris with Glycine, Arginine and NaCl, pH7.5, 10% trehalose.

 Tel: 1-631-559-9269 1-516-512-3133

 Email: [info@creative-biomart.com](mailto:info@creative-biomart.com)  Fax: 1-631-938-8127

 45-1 Ramsey Road, Shirley, NY 11967, USA

<b>Molecular Mass</b>	The protein has a calculated MW of 115.5 kDa. The protein migrates as 140-190 kDa under reducing (R) condition (SDS-PAGE) due to glycosylation.
<b>Endotoxin</b>	Less than 1.0 EU per ug by the LAL method.
<b>Purity</b>	>95% as determined by SDS-PAGE.
<b>Storage</b>	For long term storage, the product should be stored at lyophilized state at -20 centigrade or lower. Please avoid repeated freeze-thaw cycles. This product is stable after storage at: -20 centigrade to -70 centigrade for 12 months in lyophilized state; -70 centigrade for 3 months under sterile conditions after reconstitution.
<b>Reconstitution</b>	It is recommended that sterile water be added to the vial to prepare a stock solution of 0.2 ug/ul. Centrifuge the vial at 4°C before opening to recover the entire contents.

## GENE INFORMATION

<b>Gene Name</b>	LIFR
<b>Official Symbol</b>	LIFR
<b>Synonyms</b>	LIFR; leukemia inhibitory factor receptor alpha; leukemia inhibitory factor receptor; CD118; LIF receptor; CD118 antigen; SWS; SJS2; STWS; LIF-R; FLJ98106; FLJ99923
<b>Gene ID</b>	3977
<b>mRNA Refseq</b>	NM_001127671

 Tel: 1-631-559-9269 1-516-512-3133

 Email: [info@creative-biomart.com](mailto:info@creative-biomart.com)  Fax: 1-631-938-8127

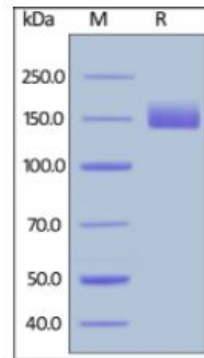
 45-1 Ramsey Road, Shirley, NY 11967, USA

Protein Refseq NP\_001121143

MIM 151443

UniProt ID P42702

**SDS-PAGE of LIFR-612H**



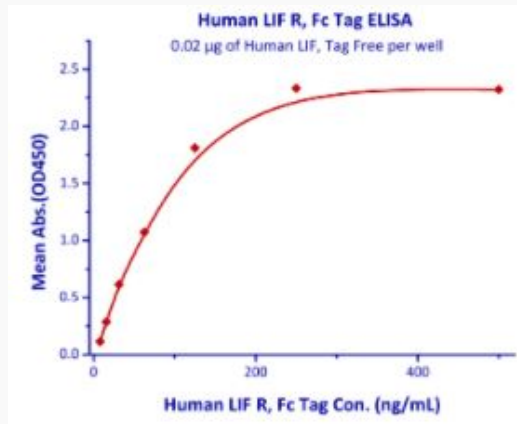
Human LIFR, Fc Tag on SDS-PAGE under reducing (R) condition. The gel was stained overnight with Coomassie Blue. The purity of the protein is greater than 95%.

Tel: 1-631-559-9269 1-516-512-3133

Email: [info@creative-biomart.com](mailto:info@creative-biomart.com) Fax: 1-631-938-8127

45-1 Ramsey Road, Shirley, NY 11967, USA

**Bioactivity-ELISA of  
LIFR-612H**



Immobilized Human LIF, Tag Free at 0.2µg/mL (100 µL/well) can bind Human LIF R, Fc Tag with a linear range of 7.8-31.25 ng/mL (QC tested).

 Tel: 1-631-559-9269 1-516-512-3133

 Email: [info@creative-biomart.com](mailto:info@creative-biomart.com)  Fax: 1-631-938-8127

 45-1 Ramsey Road, Shirley, NY 11967, USA