

Recombinant Human LILRA1 protein, His-Avi-tagged

Cat. No. LILRA1-019H Lot. No. (See product label)

SPECIFICATION

Product Overview	Recombinant Human LILRA1 Protein is expressed from mammalian with His and Avi Tag at the C-terminal. It contains Pro17-Asn461.
Species	Human
Source	HEK293
ProteinLength	Pro17-Asn461
Description	LILRA1, also known as CD85i and LIR-6, is an approximately 70 kDa variably glycosylated transmembrane protein that regulates immune cell activation. Mature human LILRA1 consists of a 445 amino acid (aa) extracellular domain (ECD) with 4 Ig-like domains, a 21 aa transmembrane segment, and a 7 aa cytoplasmic tail. LILRA1 may act as receptor for class I MHC antigens.
Form	Supplied as 0.22um filtered solution in PBS (pH 7.4).
Molecular Mass	The protein has a predicted MW of 51.4 kDa. Due to glycosylation, the protein migrates to 70-80 KDa based on Bis-Tris PAGE result.
Endotoxin	Less than 0.05 EU per ug by the LAL method.
Purity	> 95% as determined by Bis-Tris PAGE; > 95% as determined by HPLC
Storage	The product should be stored at -70°C. Please do not repeated freeze-thaw cycles.

 Tel: 1-631-559-9269 1-516-512-3133

 Email: info@creative-biomart.com  Fax: 1-631-938-8127

 45-1 Ramsey Road, Shirley, NY 11967, USA

GENE INFORMATION

Gene Name LILRA1 leukocyte immunoglobulin like receptor A1 [Homo sapiens (human)]

Official Symbol LILRA1

Synonyms CD85 antigen-like family member I; CD85i antigen; CD85i; leukocyte immunoglobulin-like receptor subfamily A member 1 soluble isoform; leukocyte immunoglobulin-like receptor subfamily A member 1; leukocyte immunoglobulin-like receptor, subfamily A (with TM domain), member 1; LILRA1; LIR6; LIR-6; LIR-6Leukocyte immunoglobulin-like receptor 6; LIR6MGC126563

Gene ID 11024

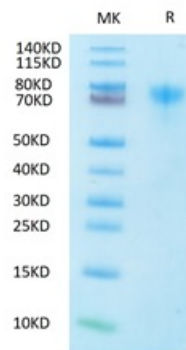
mRNA Refseq NM_001278318.2

Protein Refseq NP_001265247.1

MIM 604810

UniProt ID O75019

**Tris-Bis PAGE of
LILRA1-019H**

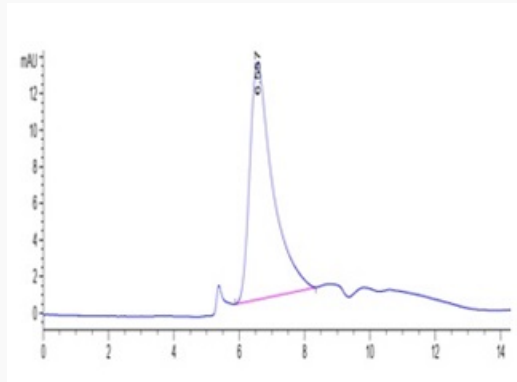


 Tel: 1-631-559-9269 1-516-512-3133

 Email: info@creative-biomart.com  Fax: 1-631-938-8127

 45-1 Ramsey Road, Shirley, NY 11967, USA

**SEC-HPLC of
LILRA1-019H**



 Tel: 1-631-559-9269 1-516-512-3133

 Email: info@creative-biomart.com  Fax: 1-631-938-8127

 45-1 Ramsey Road, Shirley, NY 11967, USA