

Recombinant Full Length Human LILRA1 Protein, C-Flag-tagged

Cat. No. LILRA1-1117HFL **Lot. No.** (See product label)

SPECIFICATION

Product Overview	Recombinant Full Length Human LILRA1 Protein, fused to Flag-tag at C-terminus, was expressed in Mammalian cells.
Species	Human
Source	Mammalian Cells
Description	This gene encodes an activating member of the leukocyte immunoglobulin-like receptor (LIR) family, which is found in a gene cluster at chromosomal region 19q13.4. The encoded protein is predominantly expressed in B cells, interacts with major histocompatibility complex class I ligands, and contributes to the regulation of immune responses. Alternative splicing results in multiple transcript variants encoding different isoforms.
Form	25 mM Tris HCl, pH 7.3, 100 mM glycine, 10% glycerol.
Molecular Mass	53.1 kDa
AA Sequence	<p> MTPIVTVLICLRSLGPRTHVQAGTLPKPTLWAEPGSVITQGSPVTLWCQGILETQEY RLYREKKTAPWI TRIPQEIVKKGQFPPIPSITWEHTGRYRCFYGSHTAGWSEPSDPLE LVVTGAYIKPTLSALPSPVVTSGGN VTLHCVSQVAFGSFILCKEGEDEHPQCLNSQP RTHGWSRAIFSVGPVSPSRRWSYRCYAYDSNSPHVWSL PSDLLELLVLGVSKKPS LSVQPGPIVAPGESLTLQCVSDVSYDRFVLYKEGERDFLQLPGPQPQAGLSQA NFT LGPVSRSYGGQYRCSGAYNLSSEWSAPSDPLDILIAGQFRGRPFISVHPGPTVASG </p>

 Tel: 1-631-559-9269 1-516-512-3133

 Email: info@creative-biomart.com  Fax: 1-631-938-8127

 45-1 Ramsey Road, Shirley, NY 11967, USA

ENVTLQCQSWG PFHTFLLTKAGAADAPLRLRSIHEYPKYQAEFPMSPV TSAHSGTY
 RCYGSLSSNPYLLSHPSDSLELMVS GAAETLSPQNKSDSKAGAANTLSPSQNKTA
 SHPQDYTVENLIRMGIAGLVVLVVLGILLFEAQHSQRSLTRTRPLEQKLISEEDLAANDI
 LDYKDDDDKV

Purity > 80% as determined by SDS-PAGE and Coomassie blue staining.

Stability Stable for 12 months from the date of receipt of the product under proper storage and handling conditions. Avoid repeated freeze-thaw cycles.

Storage Store at -80 centigrade.

Concentration >50 ug/mL as determined by microplate BCA method.

Preparation Recombinant protein was captured through anti-DDK affinity column followed by conventional chromatography steps.

Full Length Full L.

GENE INFORMATION

Gene Name [LILRA1 leukocyte immunoglobulin like receptor A1 \[Homo sapiens \(human\) \]](#)

Official Symbol [LILRA1](#)

Synonyms LIR6; CD85I; LIR-6

Gene ID [11024](#)

mRNA Refseq [NM_006863.4](#)

 Tel: 1-631-559-9269 1-516-512-3133

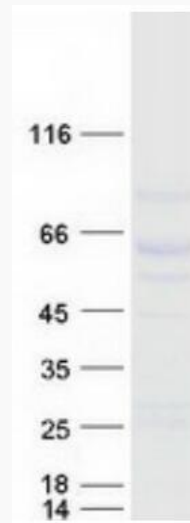
 Email: info@creative-biomart.com  Fax: 1-631-938-8127

 45-1 Ramsey Road, Shirley, NY 11967, USA


Protein Refseq NP_006854.1

MIM 604810


UniProt ID O75019



Coomassie blue staining of purified LILRA1 protein.

 Tel: 1-631-559-9269 1-516-512-3133

 Email: info@creative-biomart.com  Fax: 1-631-938-8127

 45-1 Ramsey Road, Shirley, NY 11967, USA