

Recombinant Human LILRA1 Protein, Myc/DDK-tagged, C13 and N15-labeled

Cat. No. LILRA1-1820H Lot. No. (See product label)

SPECIFICATION

Product Overview

LILRA1 MS Standard C13 and N15-labeled recombinant protein (NP_006854) with a C-terminal MYC/DDK tag, was expressed in HEK293 cells.

Species

Human

Source

HEK293

Description

This gene encodes an activating member of the leukocyte immunoglobulin-like receptor (LIR) family, which is found in a gene cluster at chromosomal region 19q13.4. The encoded protein is predominantly expressed in B cells, interacts with major histocompatibility complex class I ligands, and contributes to the regulation of immune responses. Alternative splicing results in multiple transcript variants encoding different isoforms.

Molecular Mass

53.3 kDa

AA Sequence

MTPIVTVLICLRSLGPRTHVQAGTLPKPTLWAEPGSVITQGSPVTLWCQGILETQEY
 RLYREKKTAPWITRIPQEIVKKGQFPIPSITWEHTGRYRCFYGSHTAGWSEPSDPLEL
 VVTGAYIKPTLSALPSPVVTSGGNVTLHCVSQVAFGSFILCKEGEDEHPQCLNSQPR
 THGWSRAIFSVGPVSPSRRWSYRCYAYDSNSPHVWVSLPSDLELLVLGVSKKPSLS
 VQPGPIVAPGESLTLQCVSDVSYDRFVLYKEGERDFLQLPGPQPQAGLSQANFTLG
 PVSRSYGGQYRCSGAYNLSSEWSAPSDPLDILIAGQFRGRPFISVHPGPTVASGEN
 VTLLCQSWGPFHTFLLTKAGAADAPLRLRSIHEYPKYQAEFPMSPVTSAHSGTYRCY

 Tel: 1-631-559-9269 1-516-512-3133

 Email: info@creative-biomart.com  Fax: 1-631-938-8127

 45-1 Ramsey Road, Shirley, NY 11967, USA

GSLSSNPYLLSHPSDSLELMVSGAAETLSPPQNKSDSKAGAANTLSPSQNKATASHP
 QDYTVENLIRMGIAGLVVLVVLGILLFEAQHSQRSLTRTRPLEQKLISEEDLAANDILDY
 KDDDDKV

Purity > 80% as determined by SDS-PAGE and Coomassie blue staining

Stability Stable for 3 months from receipt of products under proper storage and handling conditions.

Storage Store at -80 centigrade. Avoid repeated freeze-thaw cycles.

Concentration 50 µg/mL as determined by BCA

Storage Buffer 100 mM glycine, 25 mM Tris-HCl, pH 7.3.

GENE INFORMATION

Gene Name LILRA1 leukocyte immunoglobulin like receptor A1 [Homo sapiens (human)]

Official Symbol LILRA1

Synonyms LILRA1; leukocyte immunoglobulin like receptor A1; LIR6; CD85I; LIR-6; leukocyte immunoglobulin-like receptor subfamily A member 1; CD85 antigen-like family member I; leucocyte Ig-like receptor A1; leukocyte immunoglobulin-like receptor 6; leukocyte immunoglobulin-like receptor, subfamily A (with TM domain), member 1

Gene ID 11024

mRNA Refseq NM_006863

Protein Refseq NP_006854

 Tel: 1-631-559-9269 1-516-512-3133

 Email: info@creative-biomart.com  Fax: 1-631-938-8127

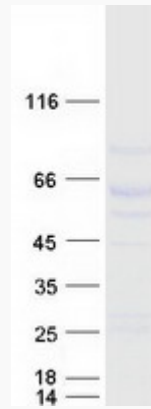
 45-1 Ramsey Road, Shirley, NY 11967, USA



MIM 604810

UniProt ID O75019

SDS-PAGE



Tel: 1-631-559-9269 1-516-512-3133

Email: info@creative-biomart.com Fax: 1-631-938-8127

45-1 Ramsey Road, Shirley, NY 11967, USA