

# Recombinant Human LILRA1 Protein (Met1-Asn461), C-His tagged

**Cat. No.** LILRA1-3764H    **Lot. No.** (See product label)

## SPECIFICATION

<b>Product Overview</b>	Recombinant human LILRA1 (Met1-Asn461) fused with the C-terminal His tag was expressed in Mammalian cells.
<b>Species</b>	Human
<b>Source</b>	Mammalian Cells
<b>ProteinLength</b>	Met1-Asn461
<b>Description</b>	This gene encodes an activating member of the leukocyte immunoglobulin-like receptor (LIR) family, which is found in a gene cluster at chromosomal region 19q13.4. The encoded protein is predominantly expressed in B cells, interacts with major histocompatibility complex class I ligands, and contributes to the regulation of immune responses. Alternative splicing results in multiple transcript variants encoding different isoforms.
<b>Form</b>	Lyophilized powder/frozen liquid
<b>Molecular Mass</b>	50.71 kDa
<b>Endotoxin</b>	< 1.0 EU/μg of the protein as determined by the LAL method.
<b>Purity</b>	>90% as determined by SDS-PAGE.

 Tel: 1-631-559-9269    1-516-512-3133

 Email: [info@creative-biomart.com](mailto:info@creative-biomart.com)     Fax: 1-631-938-8127

 45-1 Ramsey Road, Shirley, NY 11967, USA

<b>Notes</b>	For research use only.
<b>Storage</b>	Use a manual defrost freezer and avoid repeated freeze thaw cycles. Store at 2 to 8 centigrade for one week. Store at -20 to -80 centigrade for twelve months from the date of receipt.
<b>Storage Buffer</b>	Supplied as solution form in PBS or lyophilized from PBS.
<b>Reconstitution</b>	Reconstitute in sterile water for a stock solution.
<b>Shipping</b>	They are shipped out with dry ice/blue ice unless customers require otherwise.
<b>GENE INFORMATION</b>	
<b>Gene Name</b>	LILRA1 leukocyte immunoglobulin like receptor A1 [ Homo sapiens (human) ]
<b>Official Symbol</b>	LILRA1
<b>Synonyms</b>	LILRA1; leukocyte immunoglobulin like receptor A1; LIR6; CD85I; LIR-6; leukocyte immunoglobulin-like receptor subfamily A member 1; CD85 antigen-like family member I; leucocyte Ig-like receptor A1; leukocyte immunoglobulin-like receptor 6; leukocyte immunoglobulin-like receptor, subfamily A (with TM domain), member 1
<b>Gene ID</b>	11024
<b>mRNA Refseq</b>	NM_001278318
<b>Protein Refseq</b>	NP_001265247
<b>MIM</b>	604810

 Tel: 1-631-559-9269 1-516-512-3133

 Email: [info@creative-biomart.com](mailto:info@creative-biomart.com)  Fax: 1-631-938-8127

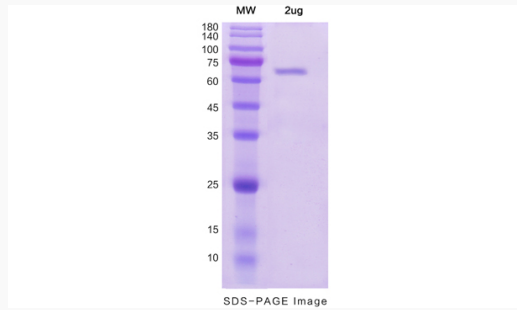
 45-1 Ramsey Road, Shirley, NY 11967, USA



UniProt ID

O75019

SDS-PAGE



Tel: 1-631-559-9269 1-516-512-3133

Email: [info@creative-biomart.com](mailto:info@creative-biomart.com) Fax: 1-631-938-8127

45-1 Ramsey Road, Shirley, NY 11967, USA