

Recombinant Human LILRA2 Protein (Met1-Asn449), C-His tagged

Cat. No. LILRA2-3957H Lot. No. (See product label)

SPECIFICATION

Product Overview	Recombinant human LILRA2 (Met1-Asn449) fused with the C-terminal His tag was expressed in Mammalian cells.
Species	Human
Source	Mammalian Cells
ProteinLength	Met1-Asn449
Form	Lyophilized powder/frozen liquid
Molecular Mass	49.39 kDa
Endotoxin	< 1.0 EU/μg of the protein as determined by the LAL method.
Purity	>90% as determined by SDS-PAGE.
Notes	For research use only.
Storage	Use a manual defrost freezer and avoid repeated freeze thaw cycles. Store at 2 to 8 centigrade for one week. Store at -20 to -80 centigrade for twelve months from the date of receipt.
Storage Buffer	Supplied as solution form in PBS or lyophilized from PBS.

 Tel: 1-631-559-9269 1-516-512-3133

 Email: info@creative-biomart.com  Fax: 1-631-938-8127

 45-1 Ramsey Road, Shirley, NY 11967, USA

Reconstitution Reconstitute in sterile water for a stock solution.

Shipping They are shipped out with dry ice/blue ice unless customers require otherwise.

GENE INFORMATION

Gene Name LILRA2 leukocyte immunoglobulin-like receptor, subfamily A (with TM domain), member 2 [Homo sapiens (human)]

Official Symbol LILRA2

Synonyms LILRA2; leukocyte immunoglobulin-like receptor, subfamily A (with TM domain), member 2; leukocyte immunoglobulin-like receptor subfamily A member 2; CD85h; ILT1; LIR 7; LIR7; ILT-1; immunoglobulin-like transcript 1; CD85 antigen-like family member H; leukocyte immunoglobulin-like receptor 7; leukocyte immunoglobulin-like receptor subfamily A member 2 soluble; CD85H; LIR-7;

Gene ID 11027

mRNA Refseq NM_001130917

Protein Refseq NP_001124389

MIM 604812

UniProt ID Q8N149

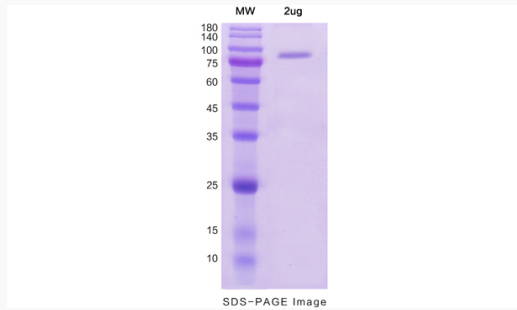
 Tel: 1-631-559-9269 1-516-512-3133

 Email: info@creative-biomart.com  Fax: 1-631-938-8127

 45-1 Ramsey Road, Shirley, NY 11967, USA



SDS-PAGE



Tel: 1-631-559-9269 1-516-512-3133

Email: info@creative-biomart.com Fax: 1-631-938-8127

45-1 Ramsey Road, Shirley, NY 11967, USA