

Recombinant Human LILRA2 protein, His & T7-tagged

Cat. No. LILRA2-6899H Lot. No. (See product label)

SPECIFICATION

Product Overview	Recombinant Human LILRA2 aa. (Val217~Leu438 (Accession # Q8N149)) fused with N-terminal His & T7 tag was produced in E. coli cells.
Species	Human
Source	E.coli
ProteinLength	Val217~Leu438
Description	<p>This gene encodes a member of a family of immunoreceptors that are expressed predominantly on monocytes and B cells, and at lower levels on dendritic cells and natural killer cells. The encoded protein is an activating receptor that inhibits dendritic cell differentiation and antigen presentation and suppresses innate immune response. Alternatively spliced transcript variants encoding different isoforms have been found. This gene is located in a cluster of related genes on chromosome 19 and there is a pseudogene for this gene on chromosome 3.</p>
Form	Freeze-dried powder
Molecular Mass	Predicted Molecular Mass: 27.6kDa.
Endotoxin	<1.0EU per 1ug (determined by the LAL method)
Purity	>95%

 Tel: 1-631-559-9269 1-516-512-3133

 Email: info@creative-biomart.com  Fax: 1-631-938-8127

 45-1 Ramsey Road, Shirley, NY 11967, USA

Characteristic	The isoelectric point is 6.9.
Applications	SDS-PAGE; WB; ELISA; IP.
Stability	The thermal stability is described by the loss rate of the target protein. The loss rate was determined by accelerated thermal degradation test, that is, incubate the protein at 37°C for 48h, and no obvious degradation and precipitation were observed. (Referring from China Biological Products Standard, which was calculated by the Arrhenius equation.) The loss of this protein is less than 5% within the expiration date under appropriate storage condition.
Storage	Avoid repeated freeze/thaw cycles. Store at 2-8°C for one month. Aliquot and store at -80°C for 12 months.
Storage buffer	Supplied as lyophilized form in PBS, pH7.4, containing 5% sucrose, 0.01% sarcosyl.
Reconstitution	Reconstitute in sterile PBS, pH7.2-pH7.4.

GENE INFORMATION

Gene Name	LILRA2 leukocyte immunoglobulin like receptor A2 [Homo sapiens (human)]
Official Symbol	LILRA2
Synonyms	ILT1; LIR7; CD85H; LIR-7; CD85 antigen-like family member H; immunoglobulin-like transcript 1; leucocyte Ig-like receptor A2; leukocyte immunoglobulin-like receptor 7; leukocyte immunoglobulin-like receptor subfamily A member 2 soluble; leukocyte immunoglobulin-like receptor, subfamily A (with TM domain), member 2; leukocyte immunoglobulin-like receptor subfamily A member 2
Gene ID	11027

 Tel: 1-631-559-9269 1-516-512-3133

 Email: info@creative-biomart.com  Fax: 1-631-938-8127

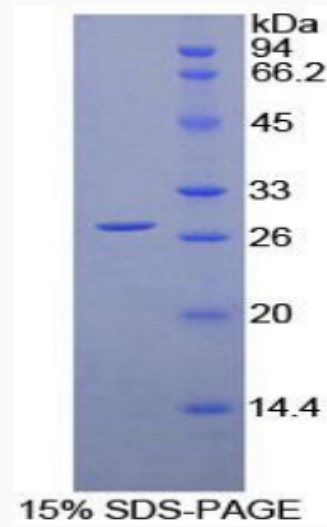
 45-1 Ramsey Road, Shirley, NY 11967, USA

mRNA Refseq [NM_001130917.2](#)

Protein Refseq [NP_001124389.2](#)

UniProt ID [Q8N149](#)

SDS-PAGE



 Tel: 1-631-559-9269 1-516-512-3133

 Email: info@creative-biomart.com  Fax: 1-631-938-8127

 45-1 Ramsey Road, Shirley, NY 11967, USA