

Recombinant Full Length Human LILRA3 Protein, His&Fc tagged

Cat. No. LILRA3-12HFL **Lot. No.** (See product label)

SPECIFICATION

Product Overview	Recombinant human LILRA3/CD85e, fused to hlgG-His-tag at C-terminus, was expressed in HEK293 cell and purified by using conventional chromatography techniques.
Species	Human
Source	HEK293
ProteinLength	1-439 aa
Description	This gene encodes a member of a family of immunoreceptors that are expressed predominantly in monocytes and B cells, and at lower levels in dendritic cells and natural killer cells. The encoded protein lacks the transmembrane region found in other members of this family. It acts as a soluble receptor for class I major histocompatibility complex (MHC) antigens. Alternatively spliced transcript variants encoding different isoforms have been found. This gene is located in a cluster of related genes on chromosome 19 and is polymorphic in human populations, with many individuals containing a deletion of this genomic region.
Tag	C-His&Fc
Form	Liquid
Molecular Mass	72.2 kDa

 Tel: 1-631-559-9269 1-516-512-3133

 Email: info@creative-biomart.com  Fax: 1-631-938-8127

 45-1 Ramsey Road, Shirley, NY 11967, USA

AA Sequence	<p>< DGS> GPLPKPTLWAEPGSVITQGSPVTLRCQGSLETQEYHLYREKKTALWITRIP QELVKKGGQFPILSITWEHAGRYCCIIYGSHTAGLSESSDPLELVVTGAYSKPTLSALPS PVVTSGGNVTIQCDSQVAFDGFILCKEGEDHPQCLNSHSHARGSSRAIFSVGPVS PSRRWSYRCYGYDSRAPYVWSLPSDLLGLLVPGVSKKPSLSVQPGPVVAPGEKLT FQCGSDAGYDRFVLYKEWGRDFLQRPGRQPQAGLSQANFTLGPVSRSYGGQYTC SGAYNLSSEWSAPSDPLDILITGQIRARPFLSVRPGPTVASGENVTLLCQSQQGMHT FLLTKEGAADSPLRLKSKRQSHKYQAEFPMSPV TSAHAGTYRCYGLSSNPYLLTH PSDPLELVVSGAAETLSPPQNKSDSKAGE< LEPKSCDKTHTCPPCPAPPELLGGPSV FLFPPKPKDTLMISRTPEVTCVVVDVSHEDPEVKFNWYVDGVEVHNAKTKPREEQY NSTYRVVSVLTVLHQDWLNGKEYKCKVSNKALPAPIEKTISKAKGQPREPQVYTLPP SRDELTKNQVSLTCLVKGFYPSDIAVEWESNGQPENNYKTTTPVLDSDGSFFLYSKL TVDKSRWQQGNV FSCSVMHEALHNHYTQKSLSLSPGKHHHHHH></p>
Endotoxin	< 1 EU/μg of protein determined by LAL method
Purity	> 95% by SDS-PAGE
Applications	SDS-PAGE
Storage	Can be stored at +2 to +8 centigrade for 1 week. For long term storage, aliquot and store at -20 to -80 centigrade. Avoid repeated freezing and thawing cycles.
Concentration	0.5 mg/mL (determined by Absorbance at 280nm)
Storage Buffer	Phosphate-Buffered Saline (pH 7.4) containing 10% glycerol
References	<ol style="list-style-type: none"> 1. Jones DC., et al, (2011) Journal of Immunology. 186:2990-2997. 2. Borges L., et al,(1997) Journal of Immunology. 159:5192-5196.

GENE INFORMATION

 Tel: 1-631-559-9269 1-516-512-3133

 Email: info@creative-biomart.com  Fax: 1-631-938-8127

 45-1 Ramsey Road, Shirley, NY 11967, USA

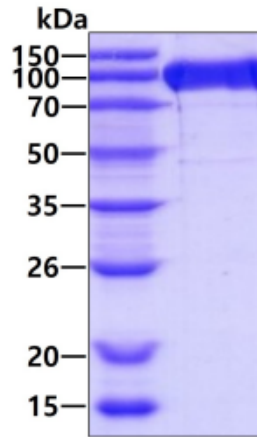
Gene Name	LILRA3 leukocyte immunoglobulin-like receptor, subfamily A (without TM domain), member 3 [Homo sapiens (human)]
Official Symbol	LILRA3
Synonyms	LILRA3; leukocyte immunoglobulin-like receptor, subfamily A (without TM domain), member 3; leukocyte immunoglobulin-like receptor subfamily A member 3; CD85e; HM31; HM43; ILT6; LIR 4; LIR4; ILT-6; immunoglobulin-like transcript 6; CD85 antigen-like family member E; leucocyte immunoglobulin-like receptor; monocyte inhibitory receptor HM43/HM31; leukocyte immunoglobulin-like receptor 4; leukocyte immunoglobulin-like receptor A3; e3; CD85E; LIR-4
Gene ID	11026
mRNA Refseq	NM_006865
Protein Refseq	NP_006856
MIM	604818
UniProt ID	Q8N6C8

 Tel: 1-631-559-9269 1-516-512-3133


 Email: info@creative-biomart.com  Fax: 1-631-938-8127

 45-1 Ramsey Road, Shirley, NY 11967, USA

SDS-PAGE



3 μ g by SDS-PAGE under reducing condition and visualized by coomassie blue stain.

 Tel: 1-631-559-9269 1-516-512-3133

 Email: info@creative-biomart.com  Fax: 1-631-938-8127

 45-1 Ramsey Road, Shirley, NY 11967, USA